



ARMATURY A POTRUBNÍ DÍLY, s.r.o., Kapitána Jaroše 256, 595 01 Velká Bíteš, CZECH REPUBLIC - EUROPE  
[www.arpod.cz](http://www.arpod.cz), email [info@arpod.cz](mailto:info@arpod.cz), tel.+00420 566 531 031, fax.+00420 566 531 034

**K85 121 563.797**

**K85 121 063.791**

**Ball valve welded**



CE

**Size :** DN 8 to 100 mm  
**Ends :** Threaded BSP or NPT , Socket or But Welding  
**Min Temperature :** -20°C  
**Max Temperature :** + 180°C  
**Max Pressure :** 63 Bars  
**Specifications :** Anti blow-out stem  
Locking device  
Full bore

**Materials :** Carbon or stainless steel



ARMATURY A POTRUBNÍ DÍLY, s.r.o., Kapitána Jaroše 256, 595 01 Velká Bíteš, CZECH REPUBLIC - EUROPE  
[www.arpod.cz](http://www.arpod.cz), email [info@arpod.cz](mailto:info@arpod.cz), tel.+00420 566 531 031, fax.+00420 566 531 034

**SPECIFICATIONS :**

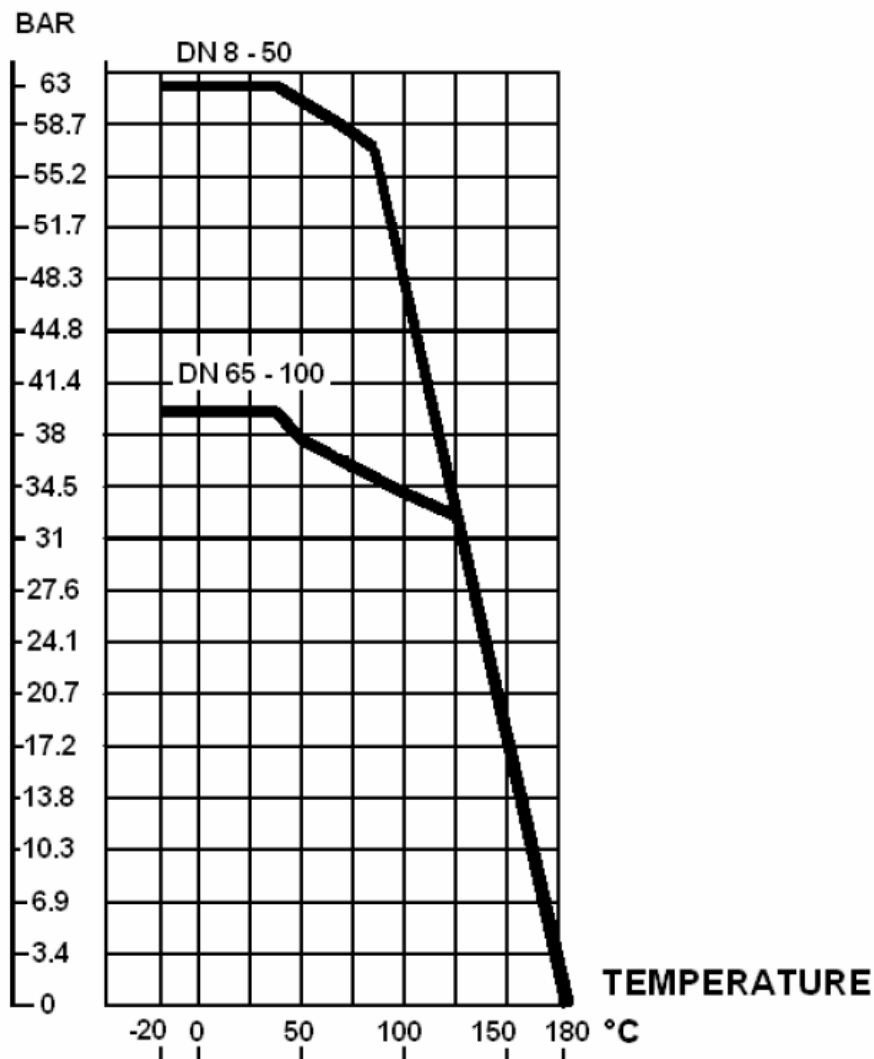
- Full bore
- Anto blow-out stem
- PTFE packing
- Locking device
- Stem extension ( option )

**USE :**

- For all common fluids
- Min and max Temperature Ts : -20°C to + 180°C
- Max Pressure Ps : 63 bars according to DN ( see graph )

**PRESSURE / TEMPERATURE GRAPH ( STEAM EXCLUDED ) :**

**PRESSURE**





ARMATURY A POTRUBNÍ DÍLY, s.r.o., Kapitána Jaroše 256, 595 01 Velká Bíteš, CZECH REPUBLIC - EUROPE  
[www.arpod.cz](http://www.arpod.cz), email [info@arpod.cz](mailto:info@arpod.cz), tel.+00420 566 531 031, fax.+00420 566 531 034

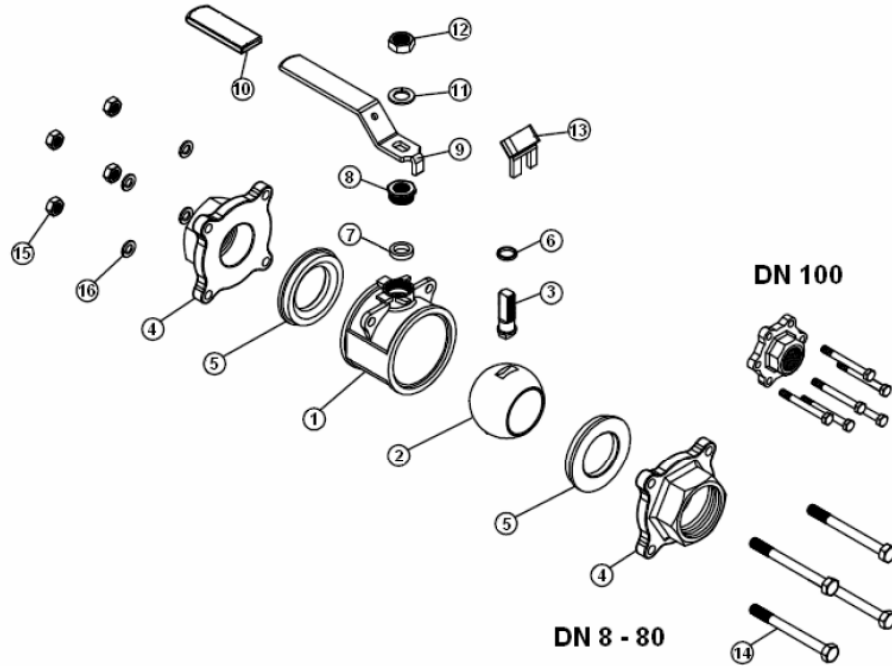
**RANGE :**

- Carbon steel Ref. **796/797/798** from DN 8 to DN 100
- Stainless steel Ref. **790/791/792/744** from DN 8 to DN 100

**ENDS :**

- Female / female threaded BSP Ref. **790/796**
- Female / female threaded NPT Ref. **744**
- Socket Welding Ref. **792/798**
- But welding Ref. **791/797**

**MATERIALS :**



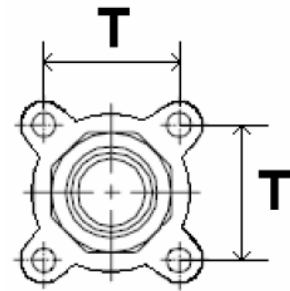
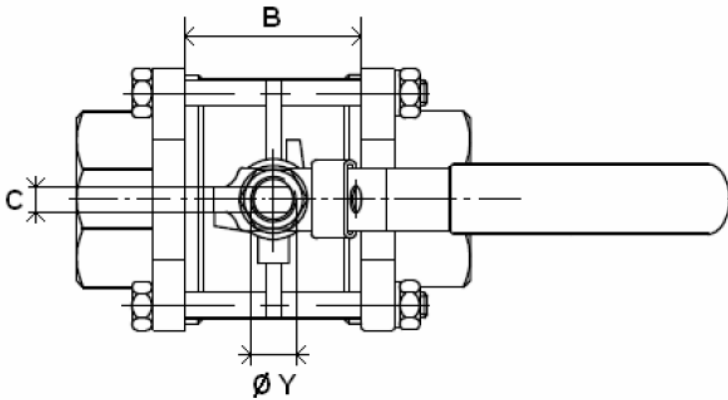
Item	Designation	Materials 796/797/798	Materials 790/791/792/744
1	Body	ASTM A216 WCB	SS 316
2	Ball	SS 304	SS 316
3	Stem	SS 304	SS 316
4	Ends	ASTM A216 WCB	SS 316
5*	Seat	PTFE filled with 15% glass	
6*	Thrust washer	PTFE	
7*	Packing	PTFE	
8	Packing nut	SS 304	
9	Handle	SS 304	
10	Handle cover	Plastic	
11	Handle washer	SS 304	
12	Handle nut	SS 304	
13	Locking device	SS 304	
14	Bolt	SS 201	
15	Bolt nut	SS 304	
16	Bolt washer	SS 304	

(\* : Included in gaskets kit )

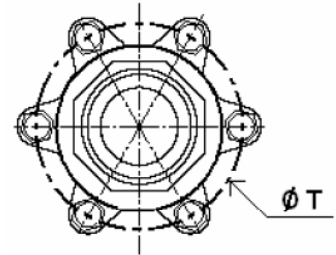
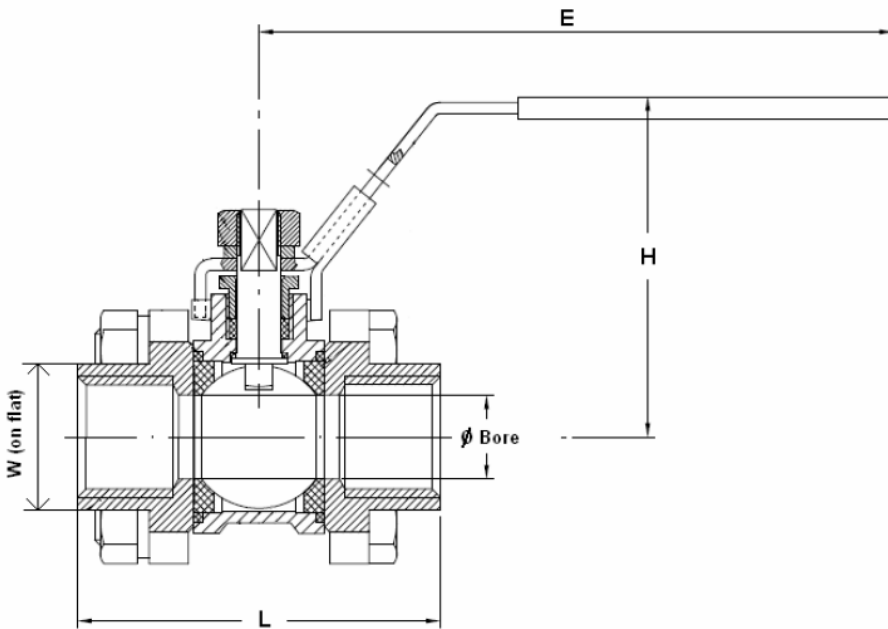


ARMATURY A POTRUBNÍ DÍLY, s.r.o., Kapitána Jaroše 256, 595 01 Velká Bíteš, CZECH REPUBLIC - EUROPE  
[www.arpod.cz](http://www.arpod.cz), email [info@arpod.cz](mailto:info@arpod.cz), tel.+00420 566 531 031, fax.+00420 566 531 034

**SIZE THREADED STAINLESS STEEL TYPES ( in mm ) :**

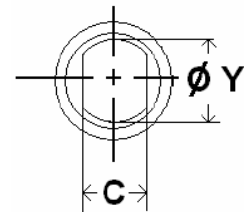


DN 1/4" - 3"



DN 4"

Stem size :

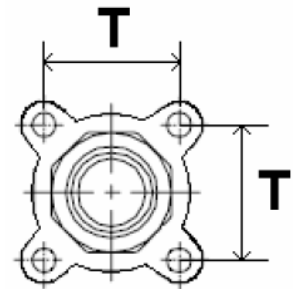
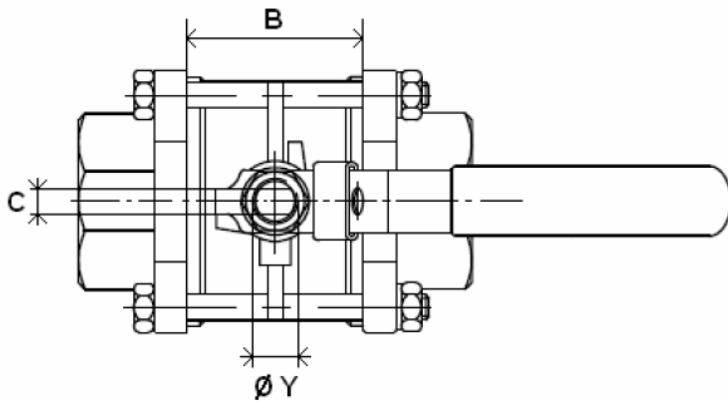


	DN	1/4"	3/8"	1/2"	3/4"	1"	1 1/4"	1 1/2"	2"	2 1/2"	3"	4"
Ref.	Ø Bore	9.2	12.8	15	20	25	32	38	50	65	80	100
	L	60	60	63	70	82	96	107	124	164.6	182.7	217.7
	B	22	22	23.3	28	34	43	49	62.4	88.1	100.2	119.1
790	E	108	108	113	113	135	135	160	160	230	230	335
744	H	52	52	63	68	79	88	97	108	128	140	172
	Ø Y	8	8	8	8	10	10	12	12	14	14	20
Threaded	C	5	5	5	5	6.5	6.5	8.5	8.5	9.8	9.8	16
	T	27.2	27.2	31.8	40	45	53	63.3	78.8	98.3	116.6	200.5
	W	18	22	26	33	40	48	55	67	84.5	101	127
	Weight ( Kg )	0.33	0.34	0.49	0.64	0.96	1.37	2.2	3.75	6.85	10.2	20.5

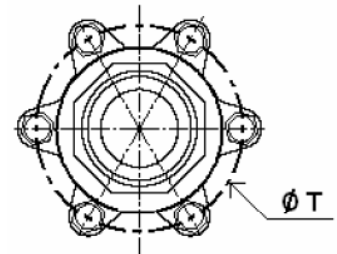
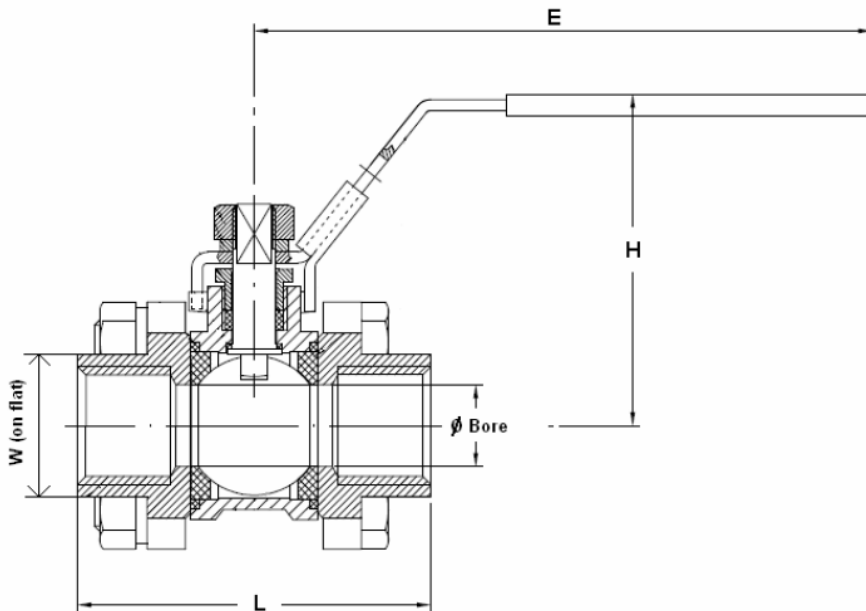


ARMATURY A POTRUBNÍ DÍLY, s.r.o., Kapitána Jaroše 256, 595 01 Velká Bíteš, CZECH REPUBLIC - EUROPE  
[www.arpod.cz](http://www.arpod.cz), email [info@arpod.cz](mailto:info@arpod.cz), tel.+00420 566 531 031, fax.+00420 566 531 034

**SIZE THREADED CARBON STEEL TYPES ( in mm ) :**



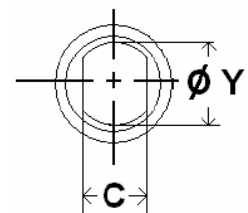
DN 1/4" - 3"



DN 4"

Stem size :

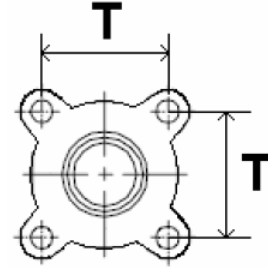
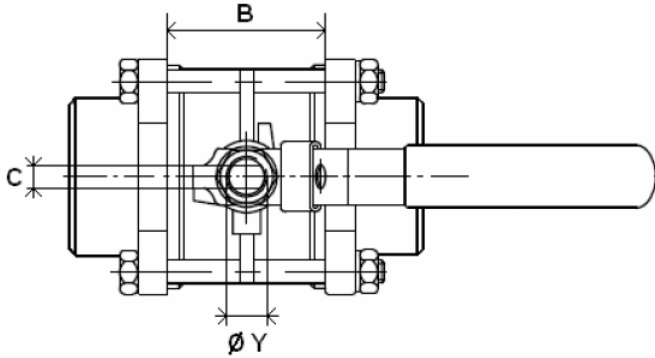
	DN	1/4"	3/8"	1/2"	3/4"	1"	1 1/4"	1 1/2"	2"	2 1/2"	3"	4"
Ref.	Ø Bore	9.2	12.8	15	20	25	32	38	50	65	80	100
	L	59	60	65.5	76.5	86.2	103.1	118	131.5	164.5	182.7	229.6
796	B	20	22	23.3	30.8	37.8	47	57	68	86.1	98.2	126.1
	E	108	108	113	113	135	135	160	160	230	230	335
Threaded	H	52	52	63	68	79	88	97	108	128	140	172
	Ø Y	8	8	8	8	10	10	12	12	14	14	20
Threaded	C	5	5	5	5	6.5	6.5	8.5	8.5	10	10	16
	T	25	28	32	40	45	53	64	79	98	116	198
Threaded	W	20	22	26	33	40	48	55	67	87	101	130
	Weight ( Kg )	0.33	0.34	0.52	0.78	1.08	1.64	2.78	4.27	8.2	13	26



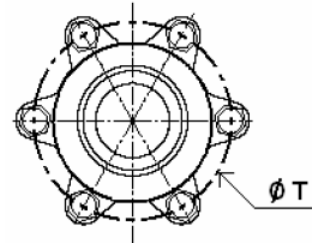
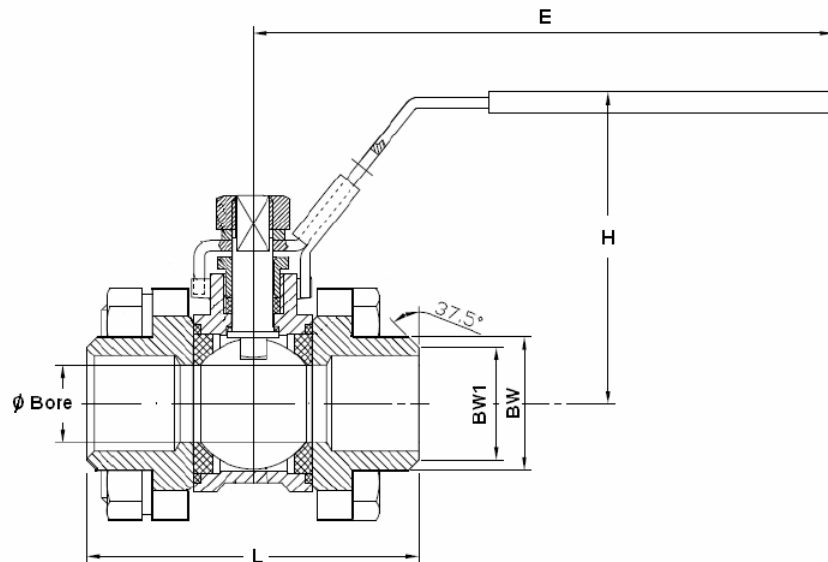


ARMATURY A POTRUBNÍ DÍLY, s.r.o., Kapitána Jaroše 256, 595 01 Velká Bíteš, CZECH REPUBLIC - EUROPE  
[www.arpod.cz](http://www.arpod.cz), email [info@arpod.cz](mailto:info@arpod.cz), tel.+00420 566 531 031, fax.+00420 566 531 034

**SIZE STAINLESS STEEL BUT WELDING TYPES ( in mm ) :**

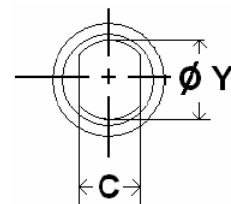


DN 1/4" - 3"



DN 4"

Stem size :

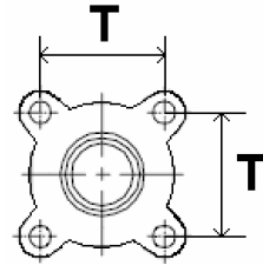
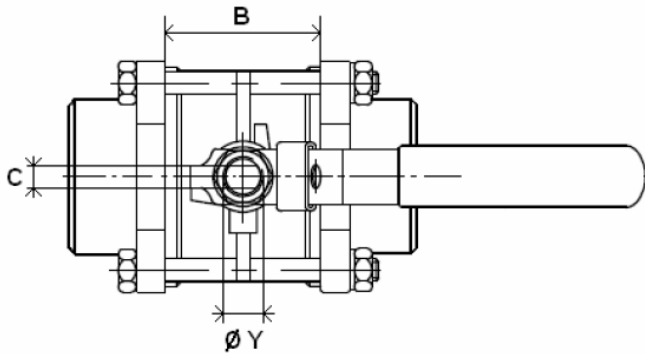


	DN	1/4"	3/8"	1/2"	3/4"	1"	1"1/4"	1"1/2"	2"	2"1/2"	3"	4"
Ref.	Ø Bore	9.2	12.8	15	20	25	32	38	50	65	80	100
	L	60	60	63	70	82	96	107	124	162.6	180.7	221.7
	B	22	22	23.3	28	34	43	49	62.4	88.1	100.2	119.1
	E	108	108	113	113	135	135	160	160	230	230	335
791	H	52	52	63	68	79	88	97	108	128	140	172
	Ø Y	8	8	8	8	10	10	12	12	14	14	20
	C	5	5	5	5	6.5	6.5	8.5	8.5	9.8	9.8	16
B.W.	T	27.2	27.2	31.8	40	45	53	63.3	78.8	98.3	116.6	200.5
	BW	14	17.5	22	27.5	34	43	49	61	76.5	90	115
	BW1	12	14.5	17	22.5	28.6	36	43	54	68	84	104
	Weight (Kg)	0.33	0.33	0.49	0.64	0.96	1.37	2.2	3.75	6.85	10.2	20.5

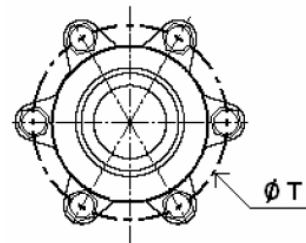
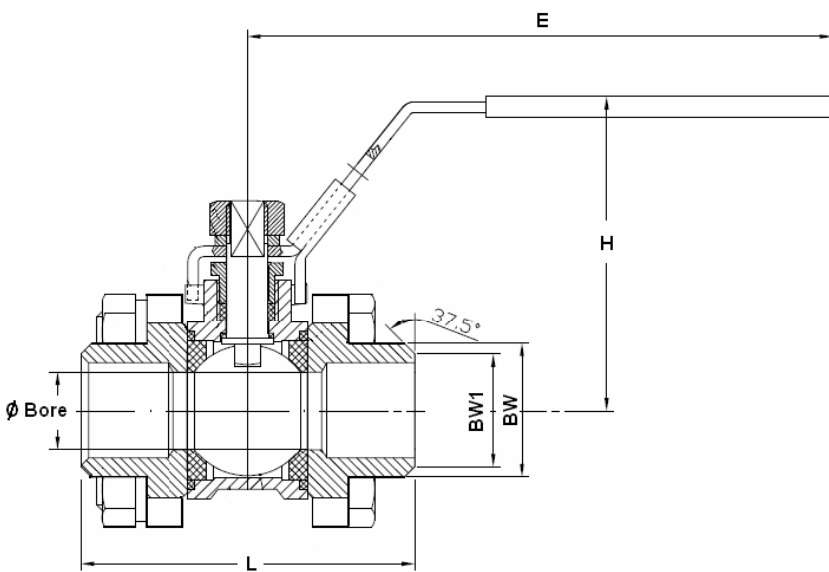


ARMATURY A POTRUBNÍ DÍLY, s.r.o., Kapitána Jaroše 256, 595 01 Velká Bíteš, CZECH REPUBLIC - EUROPE  
[www.arpod.cz](http://www.arpod.cz), email [info@arpod.cz](mailto:info@arpod.cz), tel.+00420 566 531 031, fax.+00420 566 531 034

**SIZE CARBON STEEL BUT WELDING TYPES ( in mm ) :**

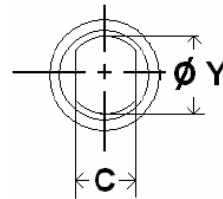


DN 1/4" - 3"



DN 4"

Stem size :

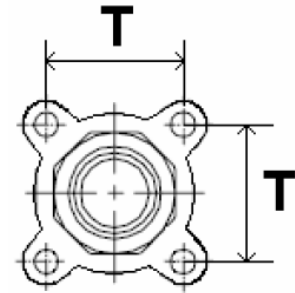
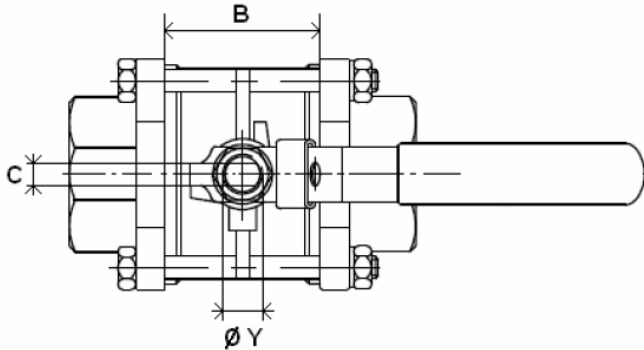


	DN	1/4"	3/8"	1/2"	3/4"	1"	1 1/4"	1 1/2"	2"	2 1/2"	3"	4"
Ref.	Ø Bore	9.2	12.8	15	20	25	32	38	50	65	80	100
	L	59	60	65.5	76.5	86.2	103.1	118	131.5	174.5	192.7	239.6
	B	20	22	23.3	30.8	37.8	47	57	68	96.1	108.2	136.1
	E	108	108	113	113	135	135	160	160	230	230	335
797	H	52	52	63	68	79	88	97	108	128	140	172
	Ø Y	8	8	8	8	10	10	12	12	14	14	20
B.W.	C	5	5	5	5	6.5	6.5	8.5	8.5	10	10	16
	T	25	28	32	40	45	53	64	79	98	116	198
	BW	14	17.5	22	27.5	34	43	49	61	76.5	90	115
	BW1	12	14.5	17	22.5	28.6	36	43	54	68	84	104
	Weight ( Kg )	0.33	0.34	0.52	0.78	1.08	1.64	2.78	4.27	8.2	13	26

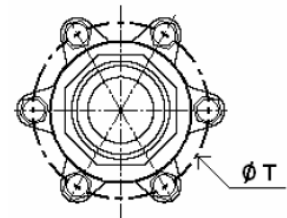
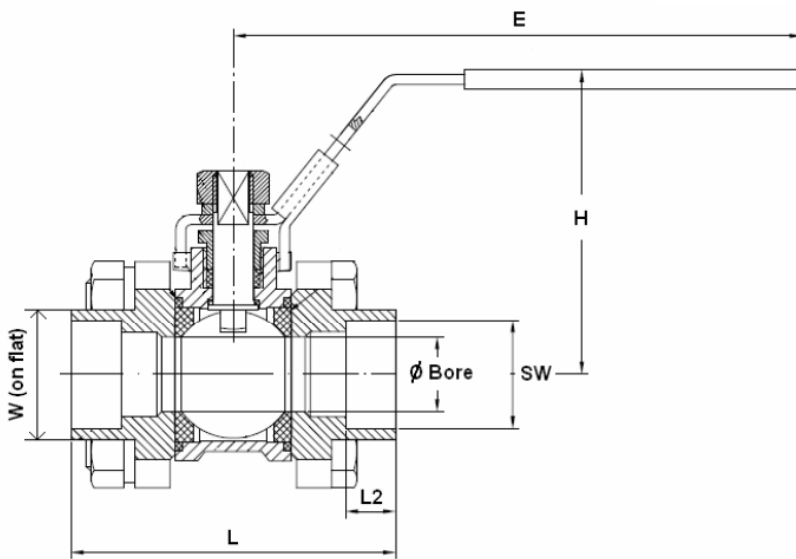


ARMATURY A POTRUBNÍ DÍLY, s.r.o., Kapitána Jaroše 256, 595 01 Velká Bíteš, CZECH REPUBLIC - EUROPE  
[www.arpod.cz](http://www.arpod.cz), email [info@arpod.cz](mailto:info@arpod.cz), tel.+00420 566 531 031, fax.+00420 566 531 034

**SIZE STAINLESS STEEL SOCKET WELDING TYPES ( in mm ) :**

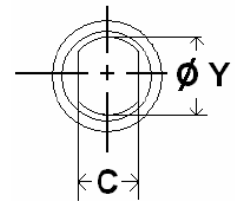


DN 1/4" - 3"



DN 4"

Stem size :



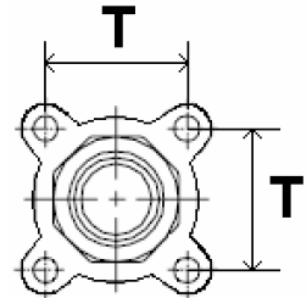
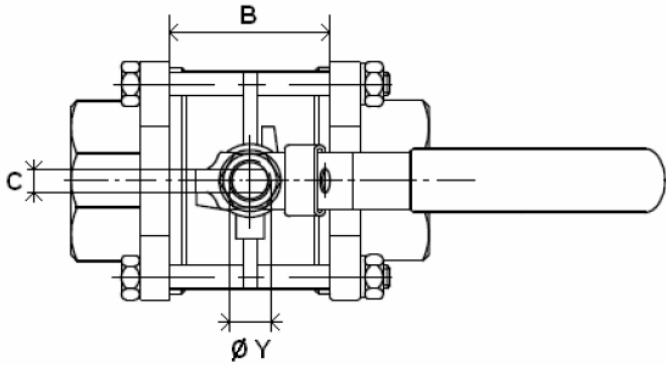
	DN	1/4"	3/8"	1/2"	3/4"	1"	1 1/4"	1 1/2"	2"	2 1/2"	3"	4"
Ref.	Ø Bore	9.2	12.8	15	20	25	32	38	50	65	80	100
	L	60	60	63	70	82	96	107	124	164.6	182.7	217.7
	B	22	22	23.3	28	34	43	49	62.4	88.1	100.2	119.1
	L2	10	10	10	13	13	13	13	16	16	16	19
792	E	108	108	113	113	135	135	160	160	230	230	335
	H	52	52	63	68	79	88	97	108	128	140	172
	Ø Y	8	8	8	8	10	10	12	12	14	14	20
S.W.	C	5	5	5	5	6.5	6.5	8.5	8.5	9.8	9.8	16
	T	27.2	27.2	31.8	40	45	53	63.3	78.8	98.3	116.6	200.5
	W	18	22	26	33	40	48	55	67	84.5	101	127
	SW	14.1	17.6	21.9	27.4	34.2	42.8	48.8	61.1	77	89.9	115.4
	Weight ( Kg )	0.33	0.33	0.49	0.64	0.96	1.37	2.2	3.75	6.85	10.2	20.5



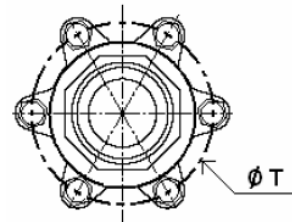
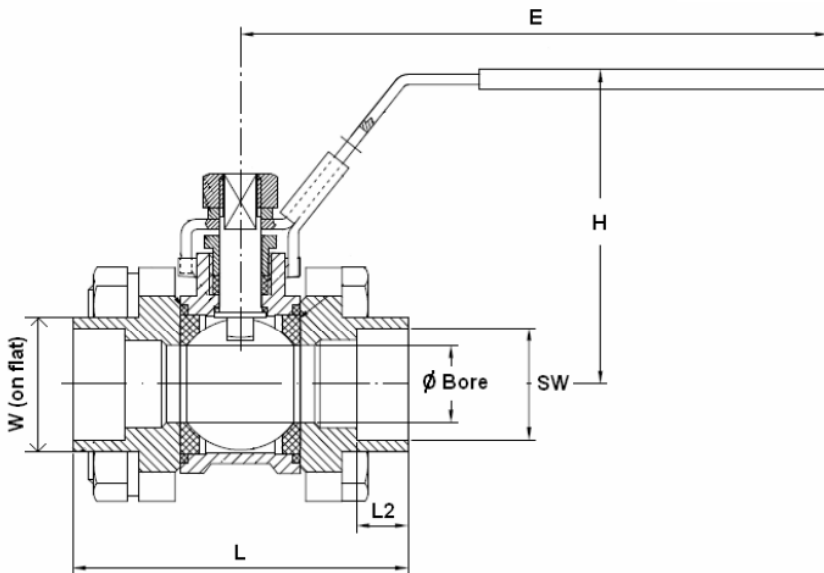


ARMATURY A POTRUBNÍ DÍLY, s.r.o., Kapitána Jaroše 256, 595 01 Velká Bíteš, CZECH REPUBLIC - EUROPE  
[www.arpod.cz](http://www.arpod.cz), email [info@arpod.cz](mailto:info@arpod.cz), tel.+00420 566 531 031, fax.+00420 566 531 034

**SIZE CARBON STEEL SOCKET WELDING TYPES ( in mm ) :**

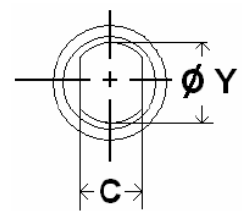


DN 1/4" - 3"



DN 4"

Stem size :

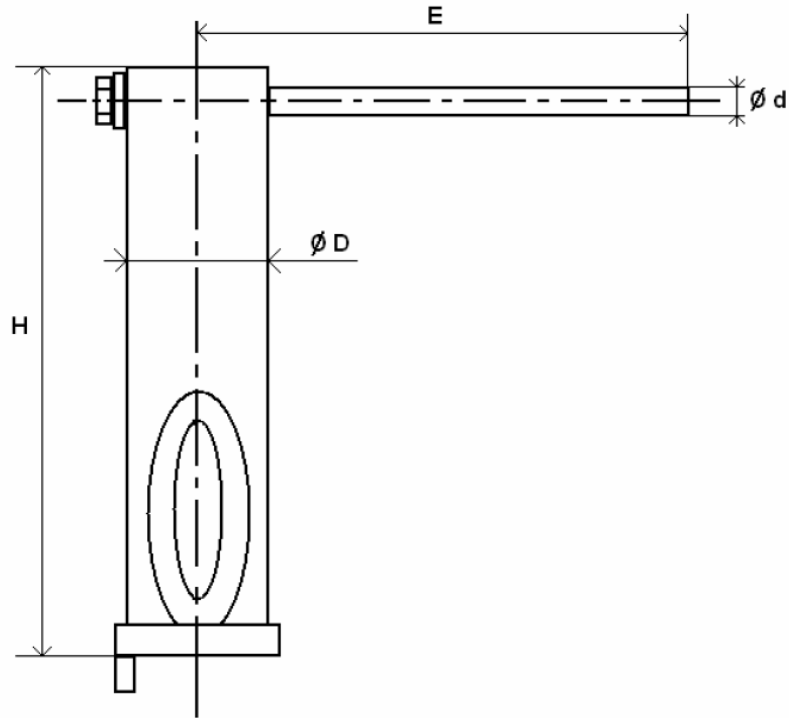


	DN	1/4"	3/8"	1/2"	3/4"	1"	1"1/4"	1"1/2"	2"	2"1/2"	3"	4"
Ref.	Ø Bore	9.2	12.8	15	20	25	32	38	50	65	80	100
	L	59	60	65.5	76.5	86.2	103.1	118	131.5	174.5	192.7	239.6
	B	20	22	23.3	30.8	37.8	47	57	68	96.1	108.2	136.1
	L2	10	10	10	13	13	13	13	16	16	16	19
798	E	108	108	113	113	135	135	160	160	230	230	335
	H	52	52	63	68	79	88	97	108	128	140	172
	C	5	5	5	5	6.5	6.5	8.5	8.5	10	10	16
S.W.	Ø Y	8	8	8	8	10	10	12	12	14	14	20
	T	25	28	32	40	45	53	64	79	98	116	198
	W	20	22	26	33	40	48	55	67	87	101	130
	SW	14.1	17.6	21.9	27.4	34.2	42.8	48.8	61.1	77	89.9	115.4
	Weight ( Kg )	0.33	0.33	0.52	0.78	1.08	1.64	2.78	4.27	8.2	13	26



ARMATURY A POTRUBNÍ DÍLY, s.r.o., Kapitána Jaroše 256, 595 01 Velká Bíteš, CZECH REPUBLIC - EUROPE  
[www.arpod.cz](http://www.arpod.cz), email [info@arpod.cz](mailto:info@arpod.cz), tel.+00420 566 531 031, fax.+00420 566 531 034

STEM EXTENSION ( in mm ) :



	DN	1/4"	3/8"	1/2"	3/4"	1"	1 1/4"	1 1/2"	2"
Ref.	H	125.5	125.5	125.5	125.5	125.5	125.5	127.5	127.5
	E	125	125	125	125	158	158	190	190
981060	Ø D	28	28	28	28	32	32	36	36
	Ø d	12	12	12	12	14	14	14	14
	Weight ( Kg )	0.3	0.3	0.3	0.3	0.4	0.4	0.6	0.6



ARMATURY A POTRUBNÍ DÍLY, s.r.o., Kapitána Jaroše 256, 595 01 Velká Bíteš, CZECH REPUBLIC - EUROPE  
[www.arpod.cz](http://www.arpod.cz), email [info@arpod.cz](mailto:info@arpod.cz), tel.+00420 566 531 031, fax.+00420 566 531 034

TORQUE VALUES ( In Nm without safety coefficient ) :

DN	1/4"	3/8"	1/2"	3/4"	1"	1"1/4	1"1/2	2"	2"1/2	3"	4"
TORQUE (Nm)	5	5	5	8	12.5	17	21	30	45	70	100

BOLT TIGHTENING TABLE ( in Nm ) :

DN	1/4"	3/8"	1/2"	3/4"	1"	1"1/4	1"1/2	2"	2"1/2	3"	4"
TORQUE (Nm)	4	4	8	8	10	13	20	20	35	45	65

STANDARDS :

- Fabrication according to ISO 9001
- DIRECTIVE 97/23/CE : CE N° 0035  
Risk Category II
- Tests according to EN 12266-1
- Threaded BSP cylindric ends according to ISO 288-1