

S43 121 4250 – Gate valve butt welding

S43 121 4420 – Gate valve butt welding



High Pressure Gate Valves [GHP]

DN 15(1/2") ÷ DN 300 (12")

PN 250 ÷ PN 420

Class 1500 ÷ Class 2500

Design

- Forged or casted body and bonnet
- Pressure sealing bonnet (self-sealing design).
- Rising stem (RS), outside screw and yoke (OS&Y)
- Split wedge type obturator
- Seating surfaces made from Stellite

Applications

- Power plant, Chemical, Petrochemical, Refining, water supply and other

Media

- Depending on the gate valves materials for: water, steam, gas, oil and other non-aggressive media.

Pressure and temperature (table D.6.4)

- Pressures up to 420 bar
- Class 1500 ÷ Class 2500
- Temperature up to 600 °C

Materials (table D.6.1)

- Carbon, heat resistant alloys and stainless steel

Advantages

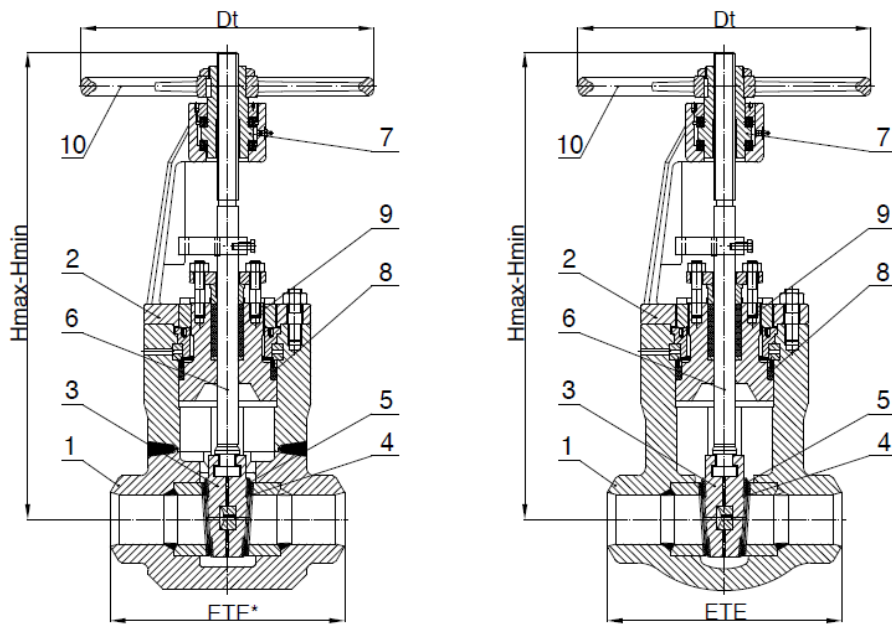
- Long service life
- Respect to emission standards
- Easy handling and maintenance
- Stem packing replacement in working conditions

Options

- Electric actuator
- Position indicator
- Extended stem
- Locking device
- By-pass
- Welding ends according to: GOST, DIN, EN.
- Other paint finishes are available upon customer's request

Testing

- Every produced gate valve was tested according to API 598 or EN 12266



Drawing D.6.1 Parts and dimensions

List of materials

Table D.6.1

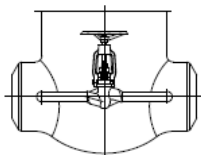
Item	Part		Groups of materials according to ASME B16.34				
			1.1	1.3 i1.5	1.9	1.10	1.15
			Application				
			up to 425 °C	up to 470 °C	up to 595 °C	up to 595 °C	up to 600 °C
			Material Code				
		12 and 13	20 and 21	22 and 23	24 and 25	28 and 29	
1	Body	Forged	A105	A182 F1	A182 F11	A182 F22	A182 F91
		Cast	A216 WCB	A217 WC1	A217 WC6	A217 WC9	A217 C12A
2	Bonnet		A216 WCB	A217 WC1	A217 WC6	A217 WC9	A217 C12A
3	Wedge	Forged	A105	A182 F1	A182 F11	A182 F22	A182 F91
		Cast	A216 WCB	A217 WC1	A217 WC6	A217 WC9	A217 C12A
4	Trim	Body Seats	HF (Stellite)				
5		Wedge seats	HF (Stellite)				
6		Stem	1.4122				
7		Stem Nut	Cu alloy				
8		Bonnet Gasket	braided graphite with corrosion inhibitor				
9		Stem Packing	braided graphite with corrosion inhibitor				
10		Handwheel	cast carbon steel				

Standards

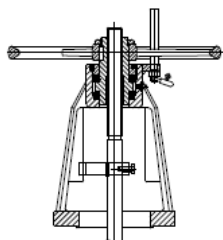
Table D.6.2

High Pressure Gate Valves	Class 1500(PN 250) ÷ Class 2500(PN 420)
End-to-end dimensions according to	ASME/ANSI B16.10 and manufacturer standard
Welding ends according to	ASME/ANSI B16.25

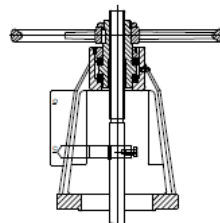
Optional execution



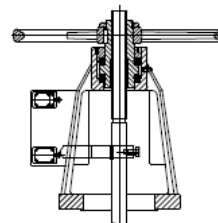
By - pass



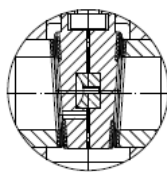
Locking device



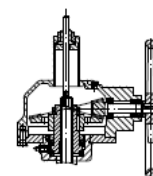
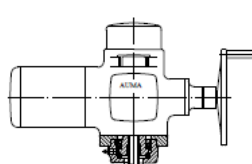
Position indicator



Limit switches



With hole in wedge



Control by electric, hydraulic actuator
or by gear

