

# L10

## L10 127 063.381 PN63 DN8-DN100 Check valve butt welding



**Size :** DN 8 to DN100  
**Ends :** Female-Female BSP or NPT, SW or BW  
**Min Temperature :** - 20°C  
**Max Temperature :** + 200°C  
**Max Pressure :** 63 Bars  
**Specifications :** 3 pieces spring type  
All positions  
Metal / metal

**Materials :** Stainless steel

# L10

## L10 127 063.381 PN63 DN8-DN100 Check valve butt welding

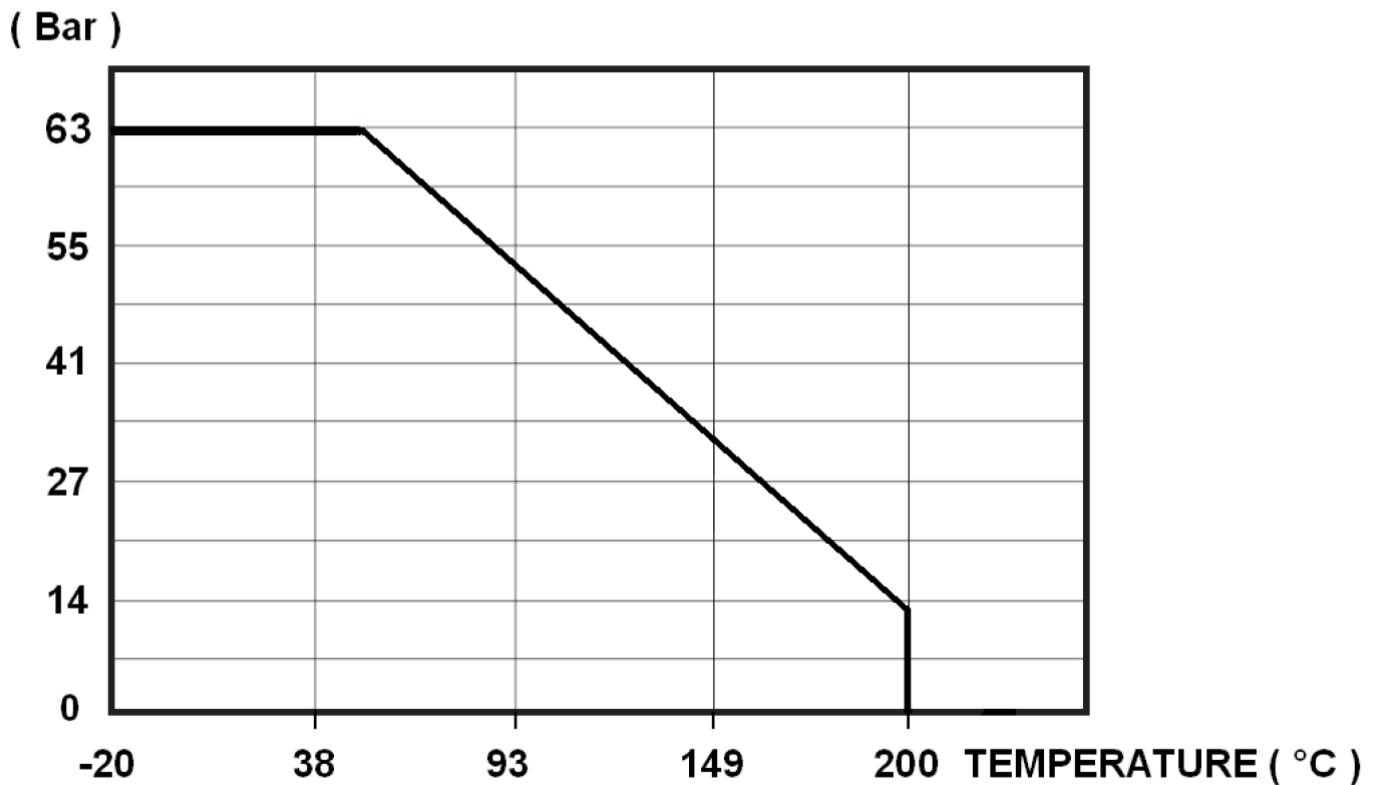
### SPECIFICATIONS :

- 3 pieces spring type
- All positions (respect the flow direction indicated by the arrow )
- Metal / metal tightness
- Stainless steel

### USE :

- Chemical and pharmaceutical industries, petrochemical industries, hydraulic installation, compressed air
- Min Temperature Ts : - 20°C
- Max Temperature Ts :+ 200°C
- Max Pressure Ps : 63 bars ( see graph under )

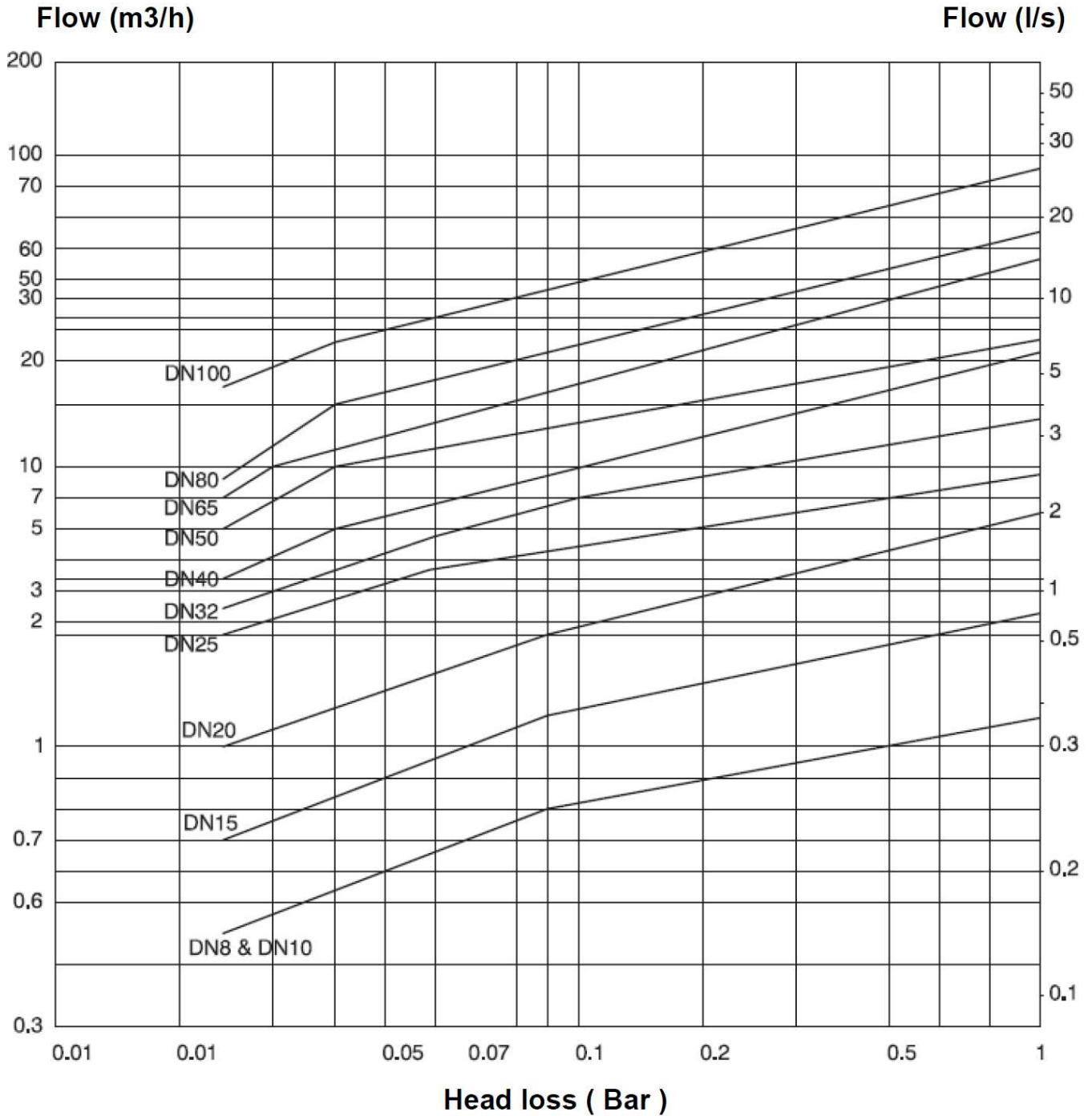
### PRESSURE / TEMPERATURE GRAPH ( STEAM EXCLUDED ) :



### FLOW COEFFICIENT Kvs ( M3 / h ) :

DN	8	10	15	20	25	32	40	50	65	80	100
Kvs ( m3/h )	1.23	1.23	2.24	6.5	9.61	15.89	22.49	25.12	57.8	64.93	91.6

HEAD LOSS GRAPH :



OPENING PRESSURE ( in mbar ) :

DN	Vertical Position ascending fluid	Horizontal Position
DN 08	25 ↑	23 →
DN 10	25 ↑	23 →
DN 15	25 ↑	23 →
DN 20	25 ↑	23 →
DN 25	25 ↑	23 →
DN 32	27 ↑	24 →
DN 40	29 ↑	25 →
DN 50	29 ↑	25 →
DN 65	31 ↑	25 →
DN 80	32 ↑	26 →
DN100	33 ↑	27 →

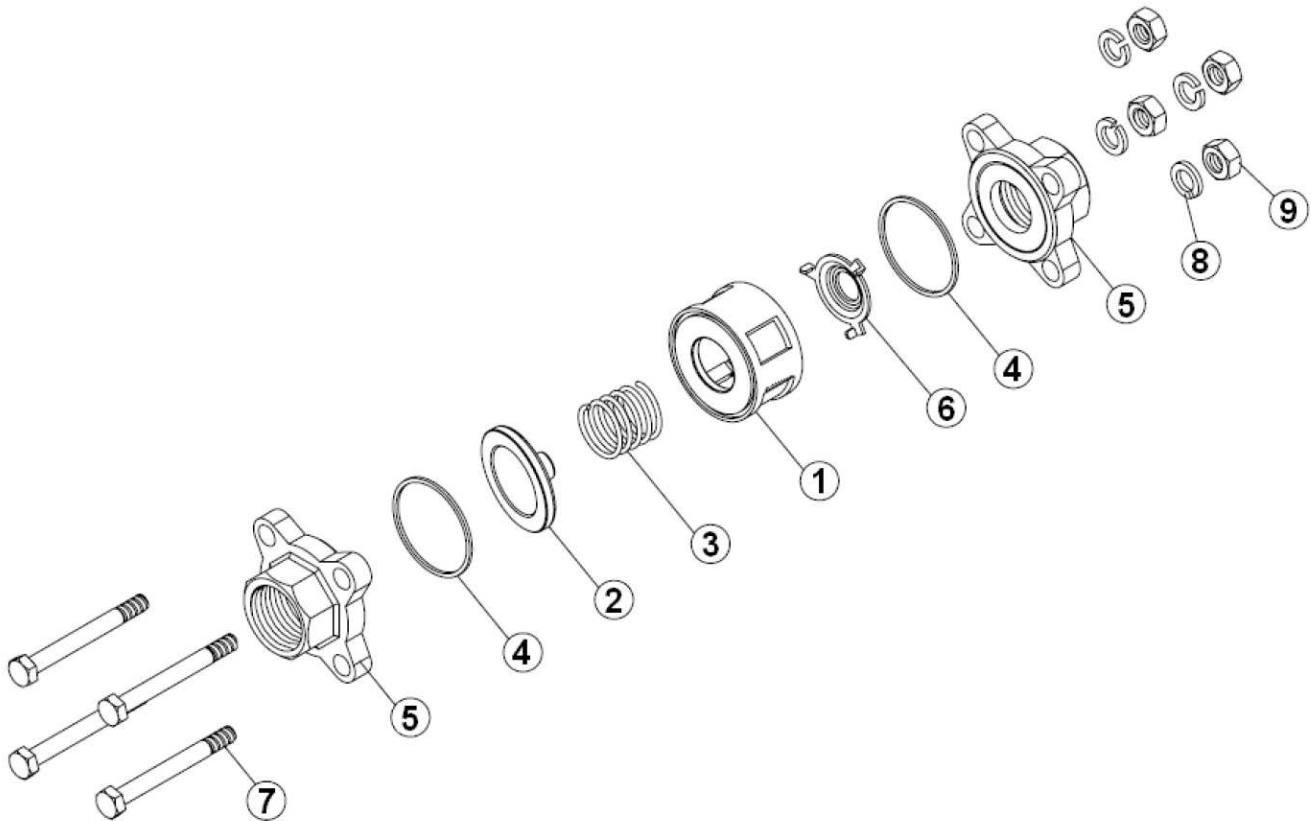
RANGE :

- Female / female threaded BSP cylindric **Ref. 380** from DN 1/4" to DN 4"
- Butt Welding ends **Ref. 381** from DN 8 to DN 100
- Socket Welding ends **Ref. 382** from DN 8 to DN100
- Female threaded BSP cylindrical with SS316 strainer **Ref. 383** from DN 3/8" to DN 4" ( Ref. 380 + Ref. 391 )
- Female / female threaded NPT **Ref. 384** from DN 1/4" to DN 2"

# L10

## L10 127 063.381 PN63 DN8-DN100 Check valve butt welding

### MATERIALS :

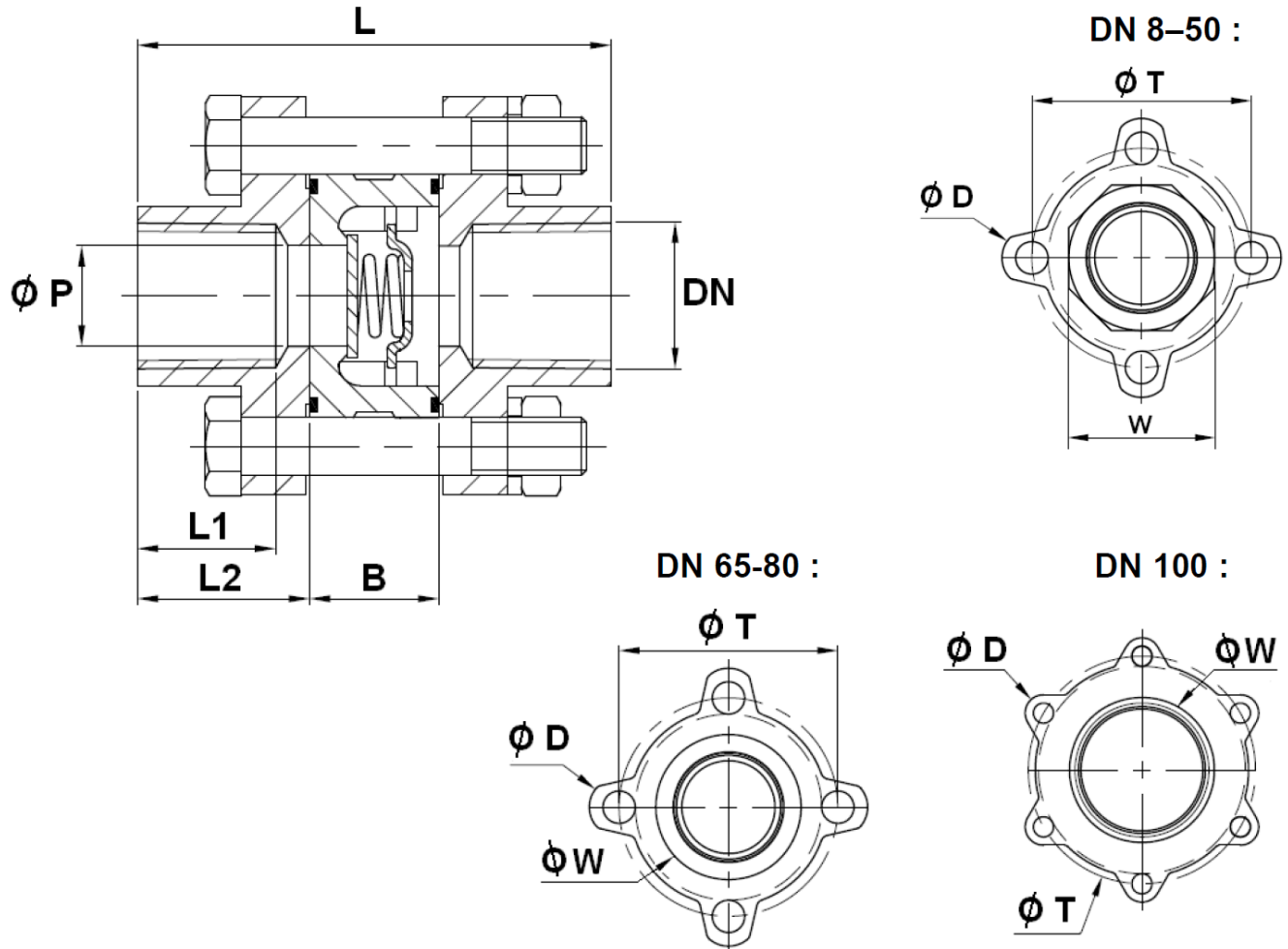


Item	Designation	Materials
1	Body	ASTM A351 CF8M
2	Disc	ASTM A240-316
3	Spring	SS 316
4	Gasket	PTFE
5	Ends	ASTM A351 CF8M
6	Spring holder	ASTM A240-316
7	Screw	SS 304
8	Washer	SS 304
9	Nut	SS 304

# L10

## L10 127 063.381 PN63 DN8-DN100 Check valve butt welding

SIZE THREADED TYPES ( in mm ) :

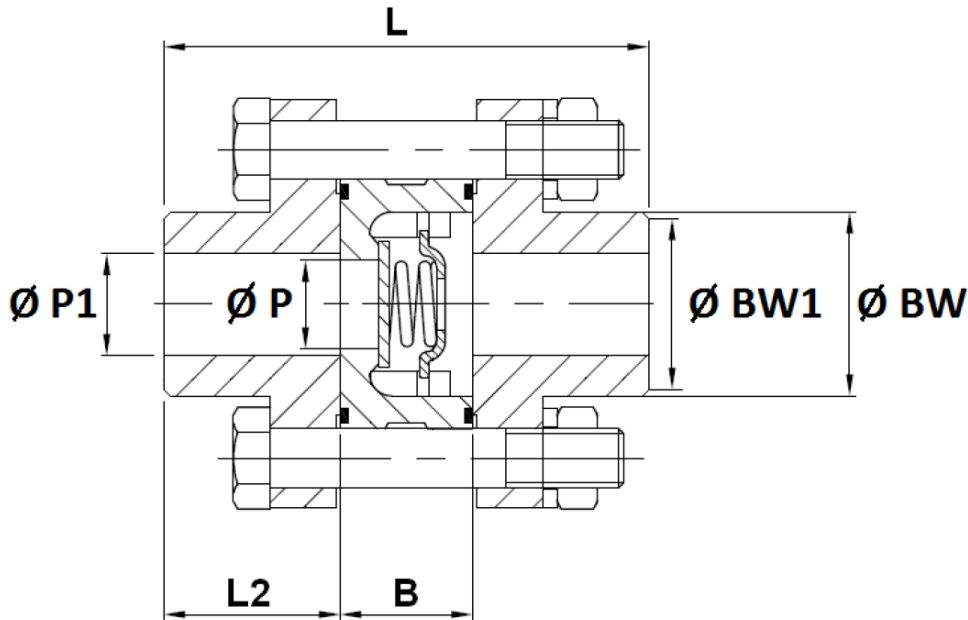


Ref.	DN	1/4"	3/8"	1/2"	3/4"	1"	1"1/4	1"1/2	2"	2"1/2	3"	4"
380/384	Ø P	10	10	14	19	25	31	39	49	64	78	97
	L	60	60	63	71	81.5	91	97.5	117	131.5	143.5	174.5
	L1	16	16	18	20	20	23	23	27	33	35	45
	L2	21	21	22	23.5	26	29	30	35	42	44	52
	B	18	18	19	24	29.5	33	37.5	47	47.5	55.5	70.5
	Ø D	12	12	14	16	16	18	18	18	18	18	18
	Ø T	36.5	36.5	42.7	51.7	58.7	72.7	83.7	98.7	129	153.5	186.5
	W	22	22	26	32	39	49	56	69	83	100	122.5
	Weight ( Kg )	0.3	0.2	0.4	0.5	0.7	1.3	1.7	2.5	4.3	6.2	11

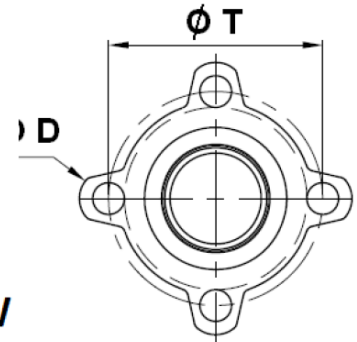
# L10

## L10 127 063.381 PN63 DN8-DN100 Check valve butt welding

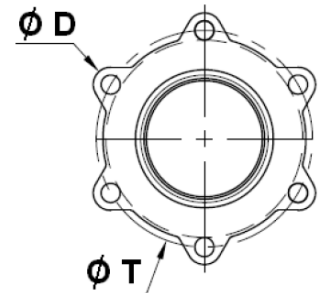
SIZE B.W. TYPE ( in mm ) :



DN 8-80 :



DN 100 :

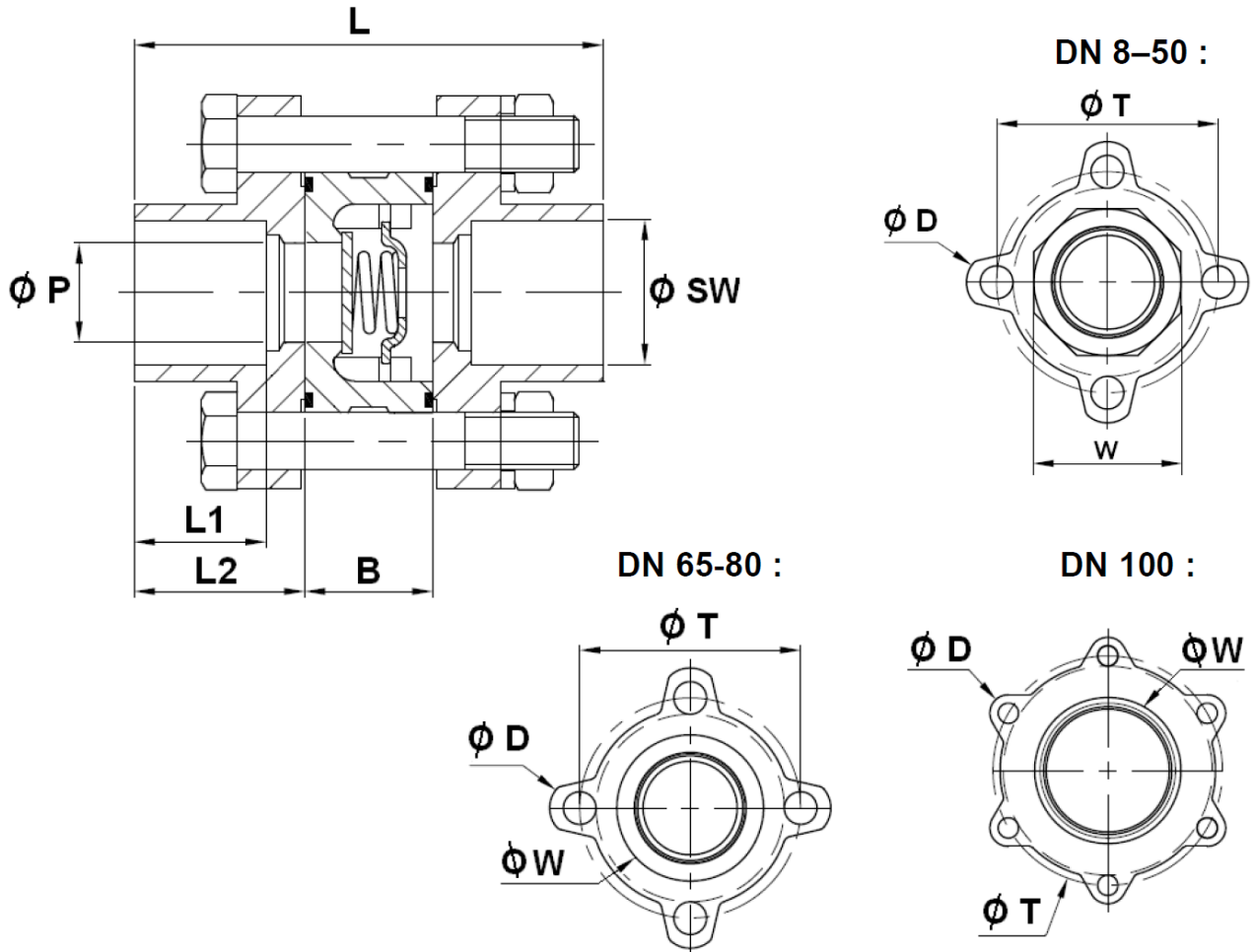


Ref.	DN	8	10	15	20	25	32	40	50	65	80	100
381	Ø P	10	10	14	19	25	31	39	49	64	78	97
	Ø P1	10	12.5	15	20	25	32	39	50	65	80	99.5
	L	66	66	67	81	89.5	92	103.5	117	131.5	143.5	174.5
	L2	24	24	24	28.5	30	29.5	33	35	42	44	52
	B	18	18	19	24	29.5	33	37.5	47	47.5	55.5	70.5
	Ø D	12	12	14	16	16	18	18	18	18	18	18
	Ø BW	18	20.5	22	28	31.5	40	46	60	78	91.5	121.5
	Ø BW1	14	16.8	18	23.3	28.5	35.8	41.2	53.5	69.4	84.1	104
	Ø T	36.5	36.5	42.7	51.7	58.7	72.7	83.7	98.7	129	153.5	186.5
Weight ( Kg )	0.3	0.2	0.4	0.5	0.7	1.3	1.7	2.5	4.3	6.2	11	

# L10

## L10 127 063.381 PN63 DN8-DN100 Check valve butt welding

SIZE S.W. TYPE ( in mm ) :



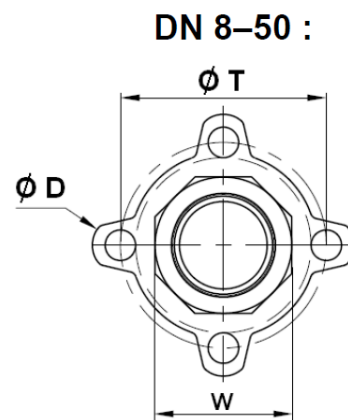
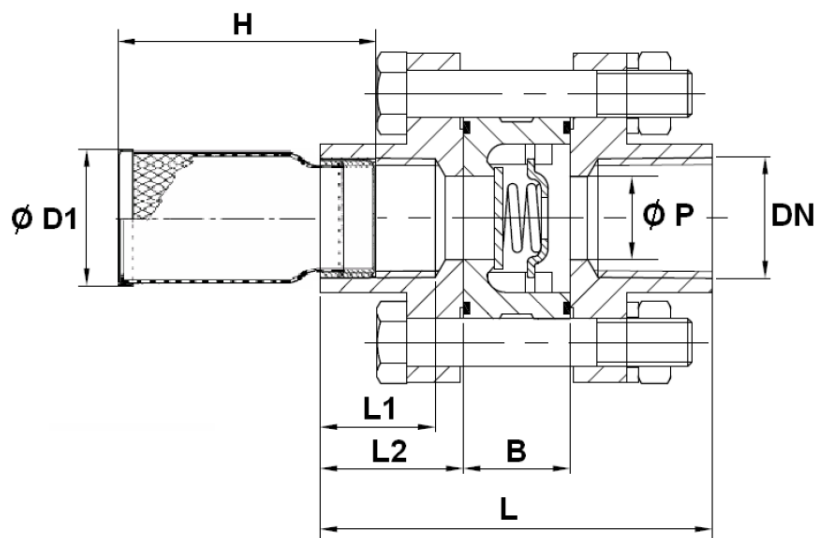
Ref.	DN	8	10	15	20	25	32	40	50	65	80	100
382	$\varnothing P$	10	10	14	19	25	31	39	49	64	78	97
	$L$	60	60	63	71	81.5	91	97.5	117	131.5	143.5	174.5
	$L1$	15.5	16.5	12.5	14.1	15.7	17.7	19.5	22	26.3	28.7	37.5
	$L2$	21	21	22	23.5	26	29	30	35	42	44	52
	$B$	18	18	19	24	29.5	33	37.5	47	47.5	55.5	70.5
	$\varnothing D$	12	12	14	16	16	18	18	18	18	18	18
	$W$	22	22	26	32	39	49	56	69	83	100	122.5
	$\varnothing SW$	14.2	17.5	21.8	27.4	34.1	42.7	49	61	77	90.2	115.3
	$\varnothing T$	36.5	36.5	42.7	51.7	58.7	72.7	83.7	98.7	129	153.5	186.5
	Weight ( Kg )		0.3	0.2	0.4	0.5	0.7	1.3	1.7	2.5	4.3	6.2



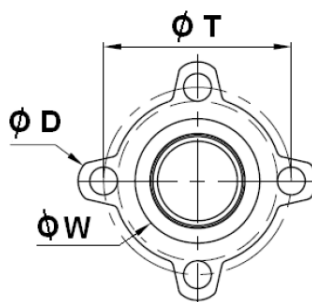
# L10

## L10 127 063.381 PN63 DN8-DN100 Check valve butt welding

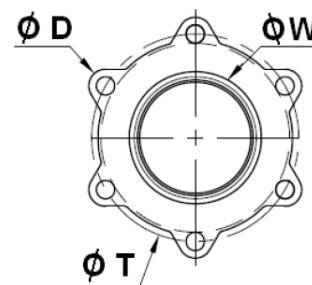
### SIZE THREADED TYPE WITH STRAINER ( in mm ) :



### DN 65-80 :



### DN 100 :



Ref .	DN	3/8"	1/2"	3/4"	1"	1"1/4	1"1/2	2"	2"1/2	3"	4"	
383	Ø P	10	14	19	25	31	39	49	64	78	97	
	L	60	63	71	81.5	91	97.5	117	131.5	143.5	174.5	
	L1	16	18	20	20	23	23	27	33	35	45	
	L2	21	22	23.5	26	29	30	35	42	44	52	
	B	18	19	24	29.5	33	37.5	47	47.5	55.5	70.5	
	Ø D1	21	23	29	37	44	49	61	80	86	116	
	H	51	55	62	69	80	89	101	114	126	144	
	Ø D	12	14	16	16	18	18	18	18	18	18	
	T	36.5	42.7	51.7	58.7	72.7	83.7	98.7	129	153.5	186.5	
	W	22	26	32	39	49	56	69	83	100	122.5	
	Mesh	1.2	1.2	1.2	1.2	1.2	1.2	1.2	1.2	1.5	1.5	2
	Weight ( Kg )	0.211	0.415	0.525	0.737	1.355	1.767	2.584	4.435	6.369	11.243	