

M10

M10.1196
Cast iron sleeve



Size : DN 40 to DN 200
Ends : Flanges PN10/16 R.F.
Min Temperature : - 10°C
Max Temperature : + 150°C
Max Pressure : 16 Bars
Specifications : Length DIN or NF (with butterfly valve)
With drain threaded 1/2" BSP

Materials : Cast iron

M10

M10.1196 Cast iron sleeve

SPECIFICATIONS :

- Length DIN or NF (with butterfly valve)
- Flanges R.F. PN10/16 up to DN150, PN10 for DN200
- With drain threaded 1/2" BSP
- The whole butterfly valve and sleeve allows to replace gate valve without modification
- Painting color grey RAL 7011 for DIN type Ref.1196 and color blue RAL 5010 for NF type Ref.1195, thickness 70-100 μ

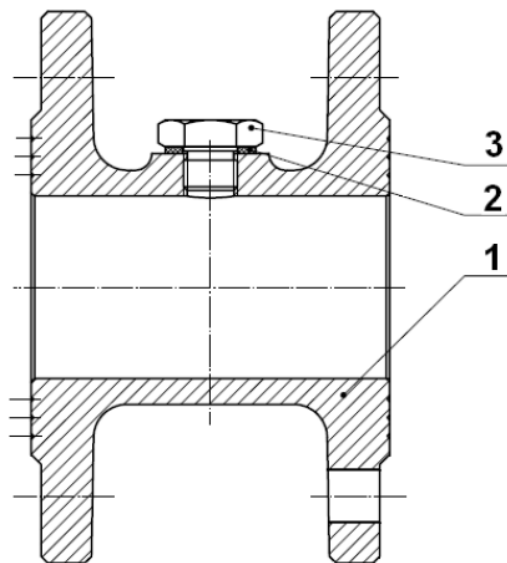
USE :

- For all common fluids
- Min Temperature Ts : - 10°C
- Max Temperature Ts :+ 150°C
- Max Pressure Ps : 16 bars

RANGE :

- Cast iron flanges R. F. PN10/16 from DN 40 to 150, PN10 for DN200 for length NF 29323 (EN 558 series 29) Ref.1195
- Cast iron flanges R. F. PN10/16 from DN 40 to 150, PN10 for DN200 for length DIN 3202 F4 (EN 558 series 14) Ref.1196

MATERIALS :

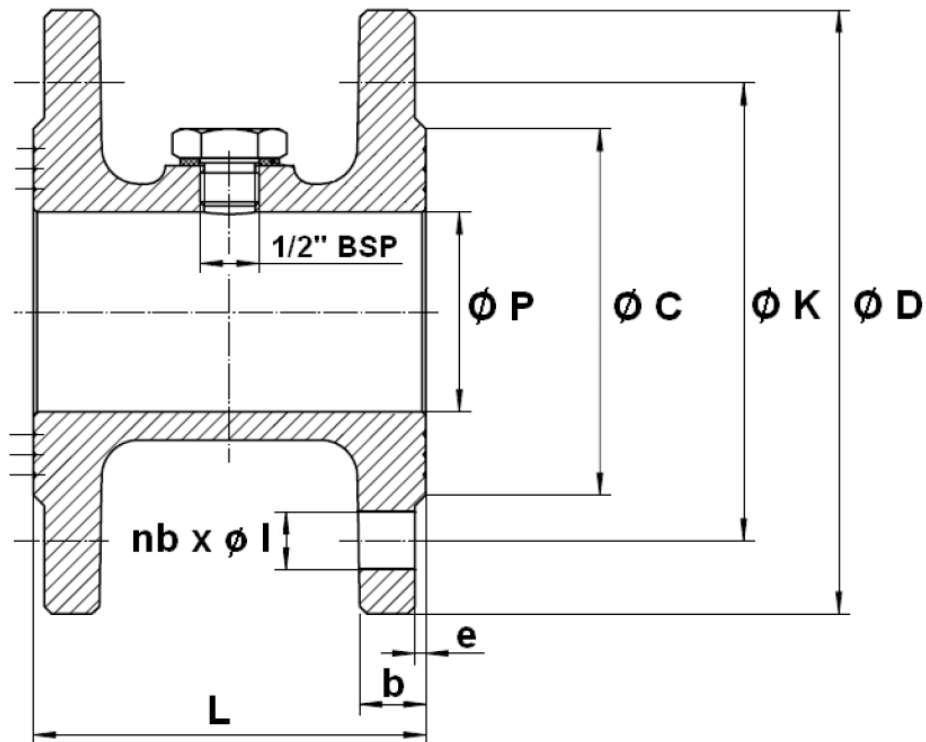


Item	Designation	Materials
1	Body	Cast iron EN GJL-250
2	Gasket	PTFE
3	Drain	Brass

M10

M10.1196 Cast iron sleeve

SIZE FOR LENGTH NF 29323 REF.1195 (in mm) :

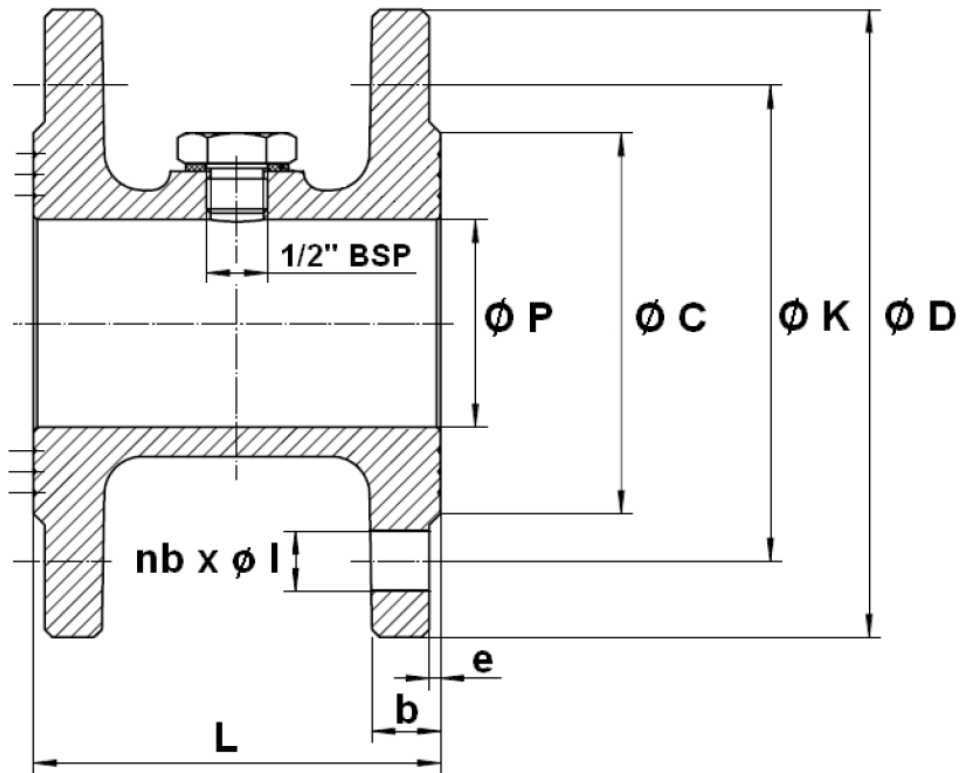


Ref.	DN	40	50	65	80	100	125	150	200
1195	L	103	99	108	114	120	130	144	168
	Ø P	42.5	54.5	70.3	82.5	107.1	131.7	159.3	207.3
	Ø D	150	165	185	200	220	250	285	340
	Ø K	110	125	145	160	180	210	240	295
	Ø C	88	100	122	138	159	181	210	266
	Nb x Ø l	4 x 19	4 x 19	4 x 19	8 x 19	8 x 19	8 x 19	8 x 23	8 x 23
	e	2	3	3	3	3	3	3.5	3.5
	b	14	15	15	17	17	20	20	20
	Weight (Kg)	4	5.4	6.8	8.2	9.5	14	17.6	25

M10

M10.1196 Cast iron sleeve

SIZE FOR LENGTH DIN 3202 F4 REF.1196 (in mm) :



Ref.	DN	40	50	65	80	100	125	150	200
1196	L	107	107	124	134	138	144	154	170
	Ø P	42.5	54.5	70.3	82.5	107.1	131.7	159.3	207.3
	Ø D	150	165	185	200	220	250	285	340
	Ø K	110	125	145	160	180	210	240	295
	Ø C	88	100	122	138	159	181	210	266
	Nb x Ø l	4 x 19	4 x 19	4 x 19	8 x 19	8 x 19	8 x 19	8 x 23	8 x 23
	e	2	3	3	3	3	3	3.5	3.5
	b	14	15	15	17	17	20	20	20
	Weight (Kg)	4	5.2	7	8.4	10.6	13	17	25

STANDARDS :

- Fabrication according to ISO 9001 : 2008
- DIRECTIVE 2014/68/EU : Products excluded from directive (Article 4, § 3)
- For length NF 29323 (EN 558 series 29) for **Ref. 1195**
- For length DIN 3202 F4 (EN 558 series 14) for **Ref. 1196**
- Flanges R.F. according to EN 1092-2 PN10/16

ASSEMBLING EXAMPLE :

