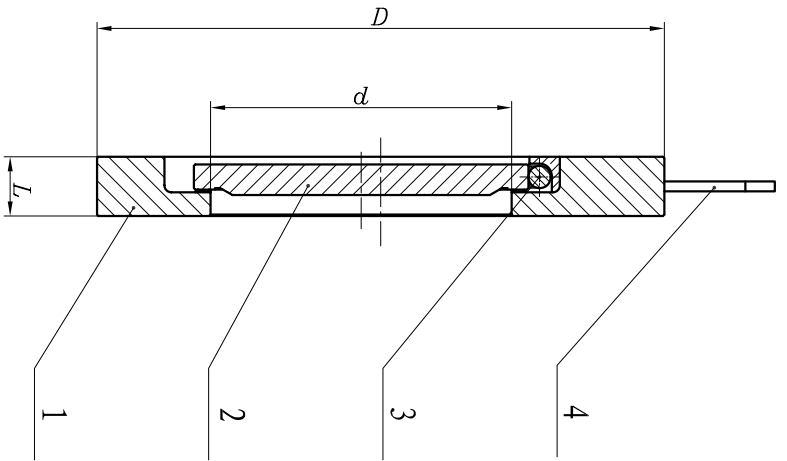
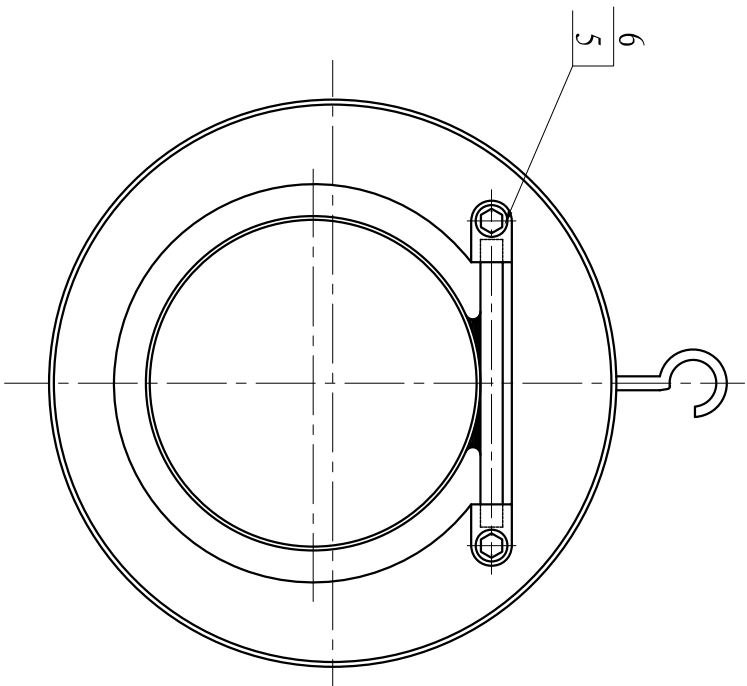


-VALVE ACCORDING TO API6D  
 -END TO END ACCORDING TO API6D  
 -FLANGED ACCORDING TO EN 1092-1

TEST PRESSURE TO API 598  
 -SHELL: 60 BAR -SEAT: 44 BAR

SIZE	d	L	D	Weight(Kg)
DN65	4.0	19	129	
DN100	7.1	19	169	
DN200	15.7	29	292	



ITEM	NAME	MATERIAL	SPECIFICATION	NOTE
6	BOIT	STAINLESS STEEL	ASTM A193 B7	
5	LOCATION	STAINLESS STEEL	ASTM A182 F6	
4	FLYING RINGS	CARBON STEEL	ASTM A29 1025+7n	
3	SHAFT	STAINLESS STEEL	ASTM A182 F6	
2	DISC	FORGED STEEL	ASTM A182 F1+13Gr	
1	BODY	FORGED STEEL	ASTM A182 F1+13Gr	

PROJECT:		-----			
REF:		-----			
NIPO REF:		-----			
ITEM:		-----			
			DATE	NAME	WAFFER SINGLE-DISC SWING CHECK VALVE PN40
			TRACED		
			CHECKED		
				SCALE	DRAWING No : 0
REV.	DATE	DRAWN	CHECKED		REV: 0