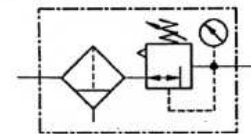


### Filter regulator

Size 0

**EX 34-C 06**

0 – 10 bar



\*Available on request

### Characteristics

Type	EX 34-C 06
Connection	G 1/4
Pressure gauge connection	G 1/8
Type of construction	diaphragm pressure regulator with secondary ventilation centrifugal-principle filter, sintered filter element installed with blank pc tank, without manometers, with control panel nut R 11-55
Input pressure p <sub>1</sub>	max. 16 bar max 10 bar with fully automatic draining
Input pressure p <sub>1</sub> with semi- and fully automatic draining	min. 1.5 bar
Control range p <sub>2</sub>	0,5 – 10 bar
Mounting position	Vertical, drain plug at bottom
Mounting type	Nut, hole circle Ø 30.5; bracket
Medium temperature	max. 60°C
Ambient temperature	-10°C / +60°C
Pore diameter in filter element	5 µm
Tank capacity	max. 16 cm <sup>3</sup> condensate
Condensate draining	Standard: semi-automatic (HA 4) Manual and fully automatic on request
Weight [g]	290

Important

**Important:** If several devices are assembled together: p<sub>1</sub> max = 12 bar

### Materials

Part	Material
Head piece (housing)	Z 410
Spring bonnet	POM-brass
Diaphragms	NBR-brass
Compression spring	Galvanised steel
Valve plug	NBR-brass
Back-pressure spring	Stainless steel
O-ring 30x2	NBR
Spring bonnet, lockable	POM-AI
Lock barrel	Brass
Filter element 5 µm	Polyethylene (sintered)
Condensate tank	Polycarbonate
Twist cap/plug guide	PA

### Ordering information

Type    Connection    Variants    Output pressure  
C XX - X X

Order example: C 05 - K 10

Connection	
05	G 1/8
06	G 1/4
Variants	
K	Plastic tank
M	Metal tank

Please use the suffix »A« to order automatic draining

### Options

- Lockable handwheel

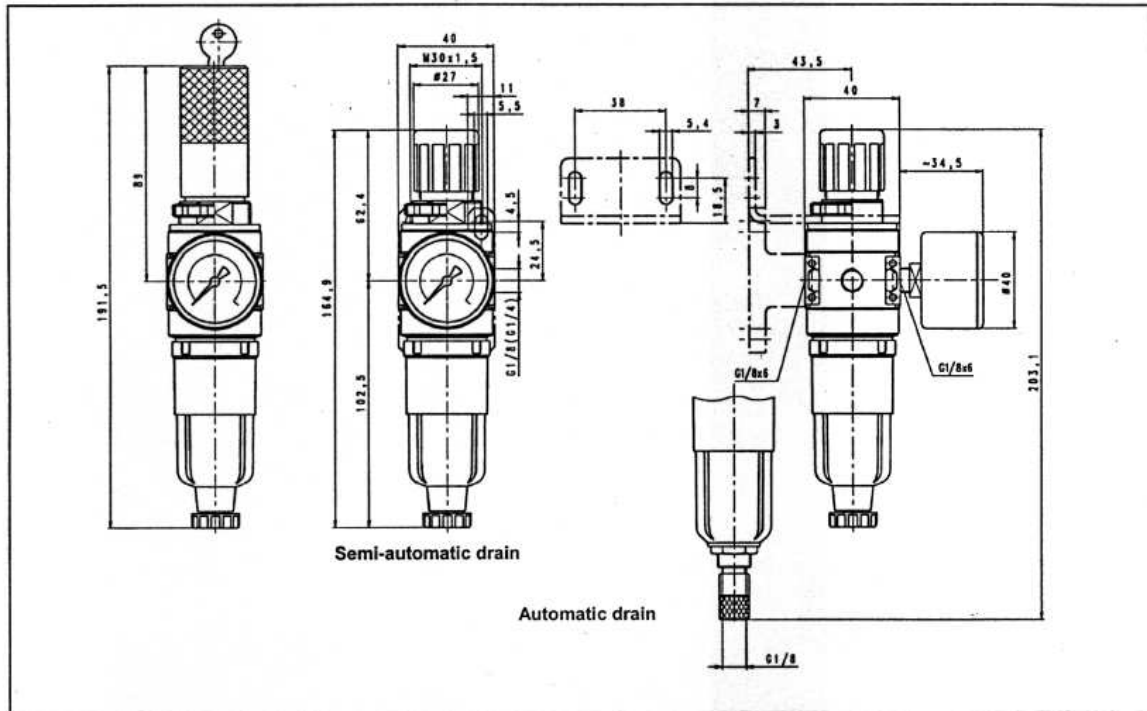
### Description

- Block design
- Simple blocking of several separate devices with tapered clamps
- Coupling packets (KP 05) are required for blocking
- Pressure setting can be locked by pressing in the handwheel
- Flow direction indicated by arrows
- Inlet in direction of arrows
- Independent of inlet pressure
- Pressure gauge Ø40 included in scope of supply
- Pressure gauge can be mounted on both sides
- Filter rating acc. to ISO 4003

### Accessories

Designation	Order No.
Nut M 30x1.5	R 11-55
Fixing bracket with nut R 11-55	MV 30
Coupling packet	KP 05
Metal tank	640/11
Filter element 5 µm	611.6.905
<b>Automatic draining:</b>	
Plastic tank	KS 11 F-A
Metal tank	641/11-A

Dimensions [mm]

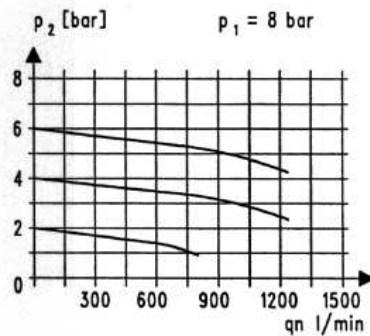


Flow rates

Flow rates if  $p_1=8$  bar

Output pressure $p_2$ [bar]		6	
Nominal flow ( $\Delta p=1$ bar)	QN l/min	940	

Flow characteristic



Hysteresis

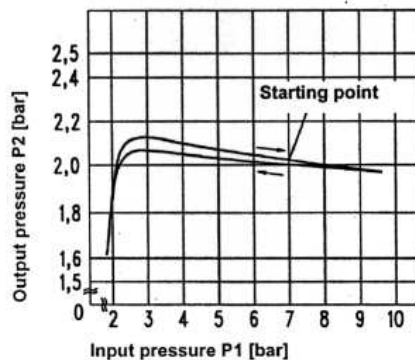
Hysteresis of  $p_2$  as a function of rising (falling)

$p_1$  with a constant draw-off quantity

QN 20 l/min

Basic setting (starting point):  $p_1: 7.0$  bar

$q_n=20$ l/min



Main spare parts

Part	Part No.
➔ Wearing parts set	22.1805.4
- Diaphragms, compl.	
- Valve plug, compl.	
- O-ring 15x2	
Pr. gauge $\varnothing 40$ , G1/8	
0 - 4 bar	110.44-KD
0 - 6 bar	110.45-KD
0 - 10 bar	110.46-KD
0 - 16 bar	110.47-KD

© Riegler 3-1-b