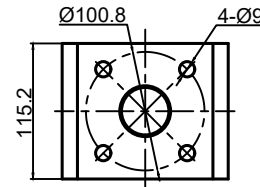
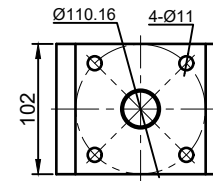


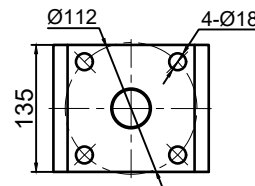
ISO 5211-F07



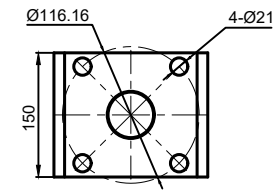
ISO 5211-F10



ISO 5211-F14



ISO 5211-F16



NO.	NAME	MATERIAL
1	Down Bonnet	ASTM A105
2	Body	ASTM A216 WCB
3	Down Shaft	A276 420
4	Pin	ASTM A182 F6a
5	Disc	ASTM A216 WCB
6	Up Shaft	A276 420
7	Packing	Graphite
8	Packing Gland	ASTM A216 WCB
9	Yoke	ASTM A105
10	Body Seat	Overlaid +STL
11	Disc Seal Ring	ASTM A182 F6a+Graphite
12	Clamp Ring	ASTM A105

DN	L	ØD2	ISO 5211
100	56	Ø155	F07
125	64	Ø185	F07
150	70	Ø211	F10
200	71	Ø266	F14
250	76	Ø312	F14
300	83	Ø363	F14
350	92	Ø422	F16

Triple offset butterfly valve		Design & Manufacturing:API 609 Face to Face:API 609 Flange Dimensions:ASME B16.5 Test:API 598
Pressure Test (CLASS/PN)	PN16	
Shell test	2.4	Mpa
Positive Seal Test	1.8	
Reverse Seal Test	--	
Air test	0.6	
Appropriate Temperature:		
Appropriate Medium:		

**APD**® L32.8/ PN16 DN100-DN350

Drawing	Auditing	DN100~DN350 PN16	
Approve	Date	2020.12.28	Assemble Drawing