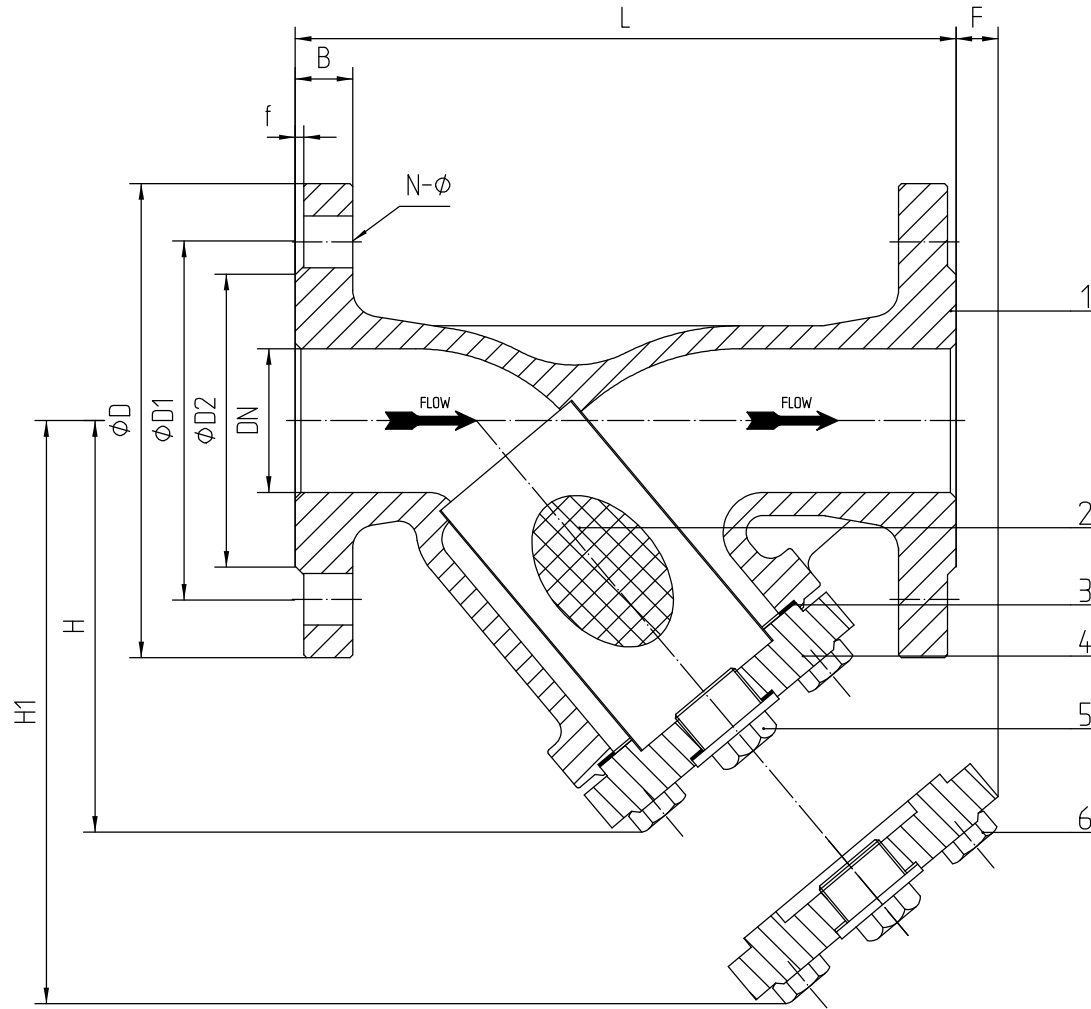
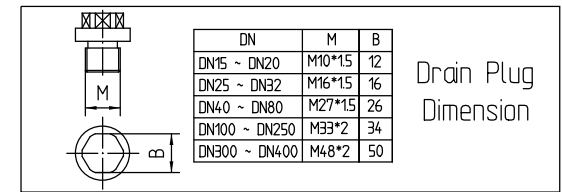


### Pressure-Temperature Ratings

Nom Pressure PN	Material	Working Pressure At Temperatures °C						
		100°C	150°C	200°C	250°C	300°C	350°C	400°C
PN40	1.0619	37.1 Bar	35.2 Bar	33.3 Bar	30.4 Bar	27.6 Bar	25.7 Bar	23.8 Bar



DN	L	PN40 Main Dimension <mm>									Screen perforation size
		D	D1	D2	B	f	N-φ	H	H1	F	
15	130	95	65	45	16	2	4x14	70	110	5	Perforation 0.6mm
20	150	105	75	58	18	2	4x14	70	135	6	
25	160	115	85	68	18	2	4x14	105	160	17	
32	180	140	100	78	18	2	4x18	118	185	25	Perforation 0.8mm
40	200	150	110	88	18	3	4x18	135	215	40	
50	230	165	125	102	20	3	4x18	140	225	35	
65	290	185	145	122	22	3	8x18	160	255	10	Perforation 1.2mm
80	310	200	160	138	24	3	8x18	190	290	22	
100	350	235	190	162	24	3	8x22	230	345	40	
125	400	270	220	188	26	3	8x26	260	400	50	Perforation 2.0mm
150	480	300	250	218	28	3	8x26	305	460	30	
200	600	375	320	285	34	3	12x30	385	585	60	
250	730	450	385	345	38	3	12x33	540	850	190	Perforation 2.0mm
300	850	515	450	410	42	4	16x33	615	970	230	
350	980	580	510	465	46	4	16x36	670	1050	220	
400	1100	660	585	535	50	4	16x39	780	1200	260	



### Application

- » Hot-water heating systems DIN 4751
- » High temperature hot-water heating systems DIN 4752
- » Heat transfer systems DIN 4754
- » Other fluids on request

6	Bolts	CS Gr8.8	
5	Drain Plug	DIN 17243 C22.8	
4	Cover	DIN 17243 C22.8	
3	Gasket	SS304+Graphite	
2	Screen	DIN 1.4301	
1	Body	EN 10213 1.0619	
NO	PART NAME	MATERIAL	REMARKS

### DIN Y Type Strainer PN40 FIG.T.831

Design and Manufacture	BS EN 13709
Face to Face Dimensions	BS EN 558-1
Flange Ends Dimensions	BS EN 1092-B1
Pressure Test	BS EN 12266

**APD**

D71 118 540.11 DN15-DN400