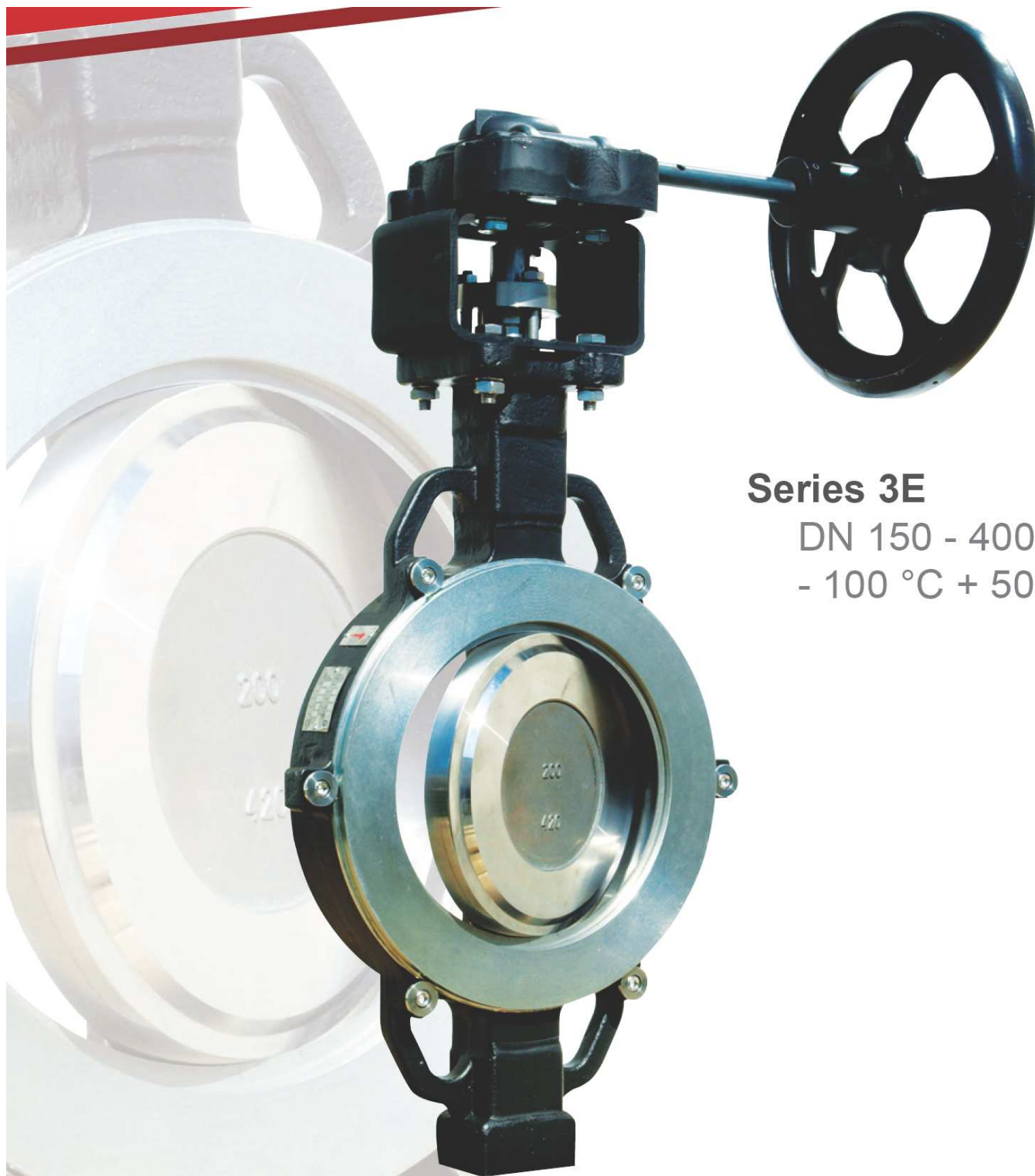


L32.8/35L4B – KLAPKA UZAVÍRACÍ MEZIPŘÍRUBOVÁ TROJITĚ EXCENTRICKÁ



Series 3E

DN 150 - 400

- 100 °C + 500 °C

CE

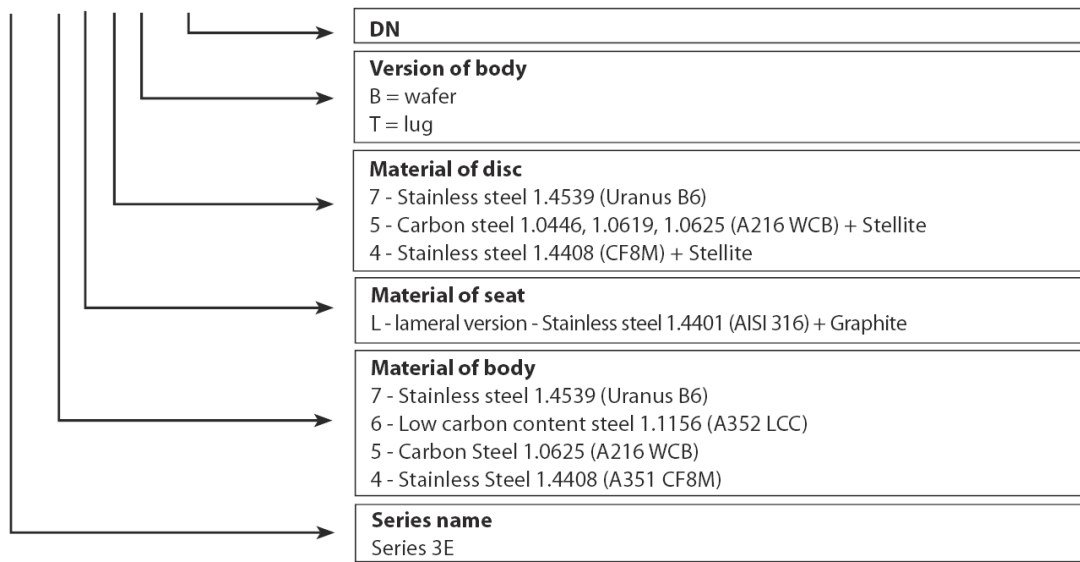
Application

High performance applications such as chilled water, water, utility lines, gasoline, natural gas, air, oil, jet fuels and process lines, such as:

- Oil tankers
- Refineries
- Oil & Gas
- Steel & Mining
- Chemical industry

Codification

3E-3 5 L 5 B 150



Standards

LEAK TEST:

- EN 12266-1, CLASS A
- ISO 5208, CLASS A
- API 598, TAB.5

FACE TO FACE ACC.:

- EN 558, SERIES 20
- ISO 5752, SERIES 20
- API 609, TAB.3

ATEX OPTION:

- Version according to ATEX 94/9/EC,
- Zone 1 and 21 – Gr II, Cat. 2 G

CONNECTION BETWEEN FLANGES:

- EN 1092-1, 2
- DIN 2631 - 35
- AME B16.5

MARKING

- EN19

TOP FLANGE:

- EN ISO 5211

WORKING STANDARD:

- EN 593 + A1

Models

Wafer type (B)



Lug type (T)



Working conditions

Working pressure	DN 150: 40 bar DN 200: up to 35 bar DN 250 - DN 400: 25 bar
Working temperature	max temperature range: - 100°C + 500°C with WCB body - 29°C + 425°C with CF8M body - 100°C + 500°C

Specific requirements on tightness please specify in the inquiry.

General characteristics

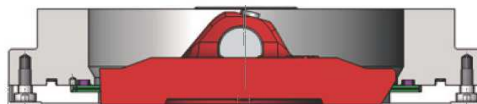
- Triple offset design
- Shut-off and regulating device
- Metal/Metal sealing
- High opening & closing performance
- Bubble tight
- Easy repair & maintenance
- Easy installation & mounting

Actuation possibilities

- Manual gearbox with handwheel
- Electric actuator 24V, 230V, 400V, other on request
- Pneumatic actuator
 - o single acting
 - o double acting

Coating

- Black painting PRIMAIRE SODOX N°1 – 60 - 80 µm
- Based on customer's request, higher degree of coating can be provided



Cross-section view

Available connections

INSTALLATION BETWEEN FLANGES (DN 150-400) TYPE B

DN	150	200	250	300	350	400
INCH	6"	8"	10"	12"	14"	16"
ISO PN 6	*	*	*	*	*	*
ISO PN 10	✓	✓	✓	✓	*	*
ISO PN 16	✓	✓	✓	✓	*	*
ISO PN 25	✓	✓	✓	*	*	*
ISO PN 40	✓	✓	✓	*	*	*
ANSI 150	✓	✓	✓	✓	✓	*
ANSI 300	✓	✓	*	*	x	x
JIS 10K	✓	*	✓	*	*	-
JIS 16K	*	✓	✓	*	*	-

✓ suitable

x not suitable

* suitable with additional machining

Other DN upon request.

For type T installation must be specified in inquiry.

Torque chart (Nm)

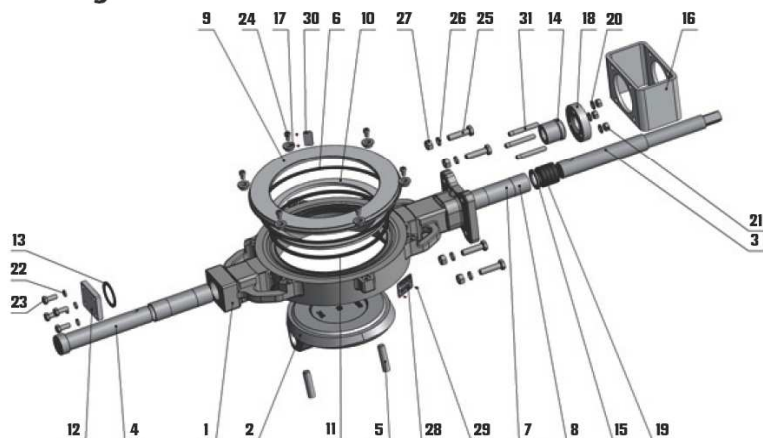
DN	150	200	250	300	350	400
PMA 10 bar	120	390	680	1130	2600	4650
PMA 16 bar	168	420	750	1250	2800	4800
PMA 25 bar	240	500	900	1400	3000	5500
PMA 40 bar	250	610*	-	-	-	-

* up to 35 bar

Other dimensions on request.

Operating torques mentioned include safety reserve.

Drawing



Item	Name
1	Body
2	Disc
3	Shaft
4	Pivot
5	Pin
6	Flange seal
7	Sleeve
8	Sleeve
9	Ring flange
10	Seat
11	Bandage
12	Cover
13	Cover seal
14	Packaging gland
15	Lock washer

16	Bracket
17	Retaining sleeve
18	Gland flange
19	Packing
20	Washer
21	Hex nut
22	Lock washer
23	Bolt
24	Screw
25	Bolt
26	Lock washer
27	Hex nut
28	Name plate
29	Rivet
30	Plate
31	Stud

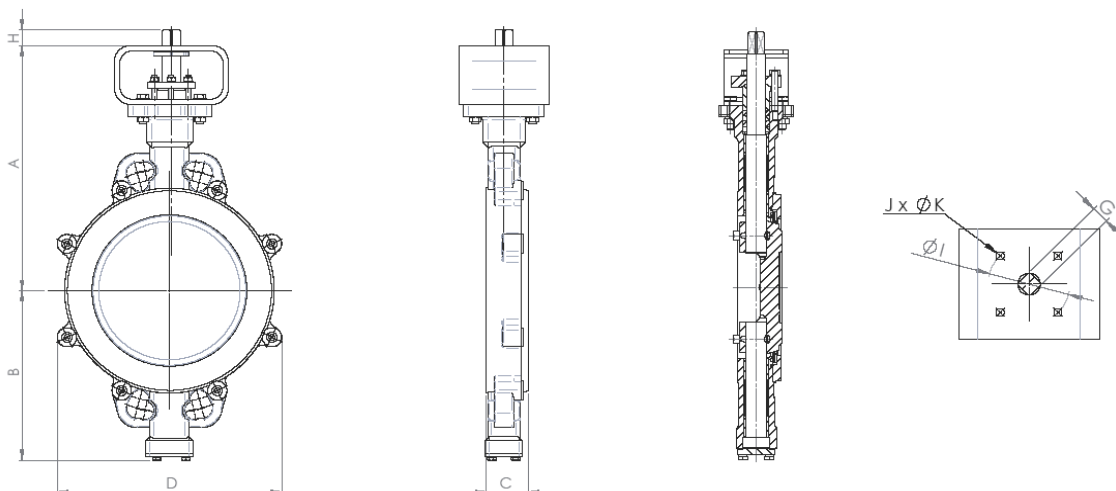


Series 3E - Application

Materials

Body	Stainless steel 1.4539 (Uranus B6) Low carbon content steel 1.1156 (A352 LCC) Carbon Steel 1.0625 (A216 WCB) Stainless Steel 1.4408 (A351 CF8M)
Disc	Stainless steel 1.4539 (Uranus B6) Carbon steel 1.0446, 1.0619, 1.0625 (A216 WCB) + Stellite Stainless steel 1.4408 (CF8M) + Stellite
Stem	Stainless steel 1.4021 (AISI 420) Stainless steel 1.4462 (A182 F51)
Sealing	Stainless steel 1.4401 (AISI 316) + Graphite
Pivot	Stainless steel 1.4021 (AISI 420) Stainless steel 1.4462 (A182 F51)
Bushing	Stainless steel 1.4404 (AISI 316L) + Ni
Washer	Stainless steel 1.4404 (AISI 316L)

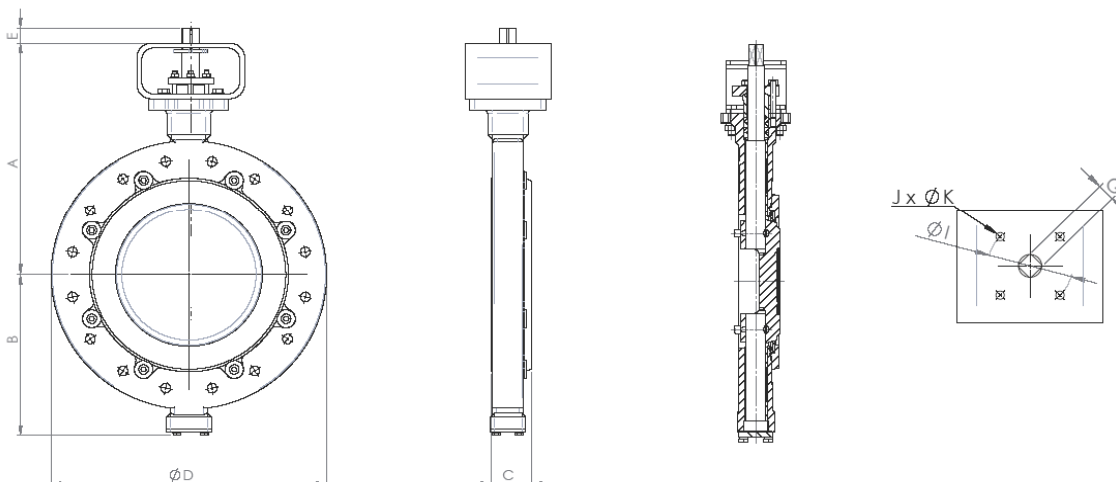
VERSION 3E B



DN		A	B	C	D	G	H	I	J	K	Weight (kg)
mm	inch										
150	6"	317	214	56	252	17	25	102	4	11	21
200	8"	349	246	50	308	17	25	102	4	11	29
250	10"	395	275	69	349	22	31	125	4	13	46
300	12"	460	313	79	393	27	31	140	4	17	67
350	14"	508	355	92	448	27	45	165	4	21	91
400	16"	556	402	103	542	36	58	165	4	21	132

Other dimensions upon request.

VERSION 3E T



DN		A	B	C	D	G	H	I	J	K	Weight (kg)
mm	inch										
150	6"	317	214	56	318	17	25	102	4	11	28
200	8"	349	246	50	381	17	25	102	4	11	41
250	10"	395	275	69	450	22	31	125	4	13	70
300	12"	460	313	79	521	27	31	140	4	17	105
350	14"	508	355	92	557	27	45	165	4	21	140
400	16"	556	402	103	657	36	58	165	4	21	211

Other dimensions upon request.